



# 81st Annual Picton District AH&I Society Inc. PICTON SHOW

**26th and 27th October 2019**

**Schedule of Events and Entertainment  
featuring Saturday Night Bull Ride**

**Victoria Park Picton**

**Major Sponsors**

*Picton Mall*  
Corbett Court Pty Ltd

**PICTON  
SAND & SOIL**

 **NARELLAN  
POOLS**

**JG PLUMBING  
& CIVIL**

**AWPM  
CIVIL PTY LTD**



*Thornton Bros Roses*

**BRADCORP**

**NATURAL  
LANDSCAPING**





specialising in customisation  
of all makes and models of  
cars new & old

## **REGOS - TYRES - CONVERSIONS ALL MECHANICAL REPAIRS**

**Brake Disc & Drum Machining**

**Flywheel Machining**

**Electronic Tuning & EFI Service**

**Air Conditioning Service**

**Auto Transmission Service & Repairs**

**Tyres & Wheel Balancing**

**Exhausts - Standard & Custom**

**Pink Slips**

**Gearbox & Clutch Repairs**

**New Car Log Book Servicing**

**Fleet Car Servicing**

# **4677 1664**

Lic No MVRL 53549

**U2/61 Bridge Street Picton NSW 2571 [www.jcautomotive.com.au](http://www.jcautomotive.com.au)**



# Welcome to The Picton Show

**On behalf of the Picton A.H & I Society it is with great pleasure that I present to you the 81st Picton Show.**

This coming show promises to be even bigger and better than last years success.

We look forward to welcoming our regular sideshows entertainers, community groups and local businesses.

This year we will be bringing back the Bull Ride by popular demand which will be on the Saturday Night.

Our favourites will be back fireworks, wood chop, horses, cattle, poultry, pavilion, show bags, show rides, snake display, mechanical bull and the ever popular ute show.

The Picton Show Society could not present the annual show if it wasn't for the support from our local businesses, we truly are very grateful for all the sponsorship we have received going into the show thankyou everybody.

The smooth running show would not be possible without the huge efforts of many which largely go unrecognized and as President I would like to take this opportunity to thank my show committee and members for their tireless efforts in making the show a wonderful community event.

Hope to see you there come up and say hi.

**Mick Seccull President**

## Picton District Agricultural, Horticultural & Industrial Soc. Inc.

P.O. Box 34 Picton, NSW 2571 Ph. 02 4677 2485  
www.pictonshow.com.au

### Officials of the Society 2019

<b>Patrons</b>	Peta Seaton	Marie Wonson
	Michael Banasik	Jai Rowell
	Jan Wilton	

<b>President</b>	Mick Seccull
<b>Senior Vice President</b>	Chris Seccull
<b>Vice President</b>	Mick Haynes
<b>Vice President</b>	Steve Agosti
<b>Secretary</b>	Susan Hill
<b>Assistant Secretary</b>	Colleen Haynes
<b>Treasurer</b>	Gail Apps
<b>Assistant Treasurer</b>	Chris Seccull
<b>Media Officers</b>	Kaitlyn Munroe
	Steve Agosti

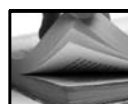
### General Committee

Steve Agosti, Gail Apps, Dr Denys & Judith Cato, Norma Crocker, Colleen Haynes, Mick Haynes, Susan Hill, Chris Seccull, Kate Seccull, Mick Seccull, Kaitlyn Munroe

### Showgirl Rural Achiever Committee

Katie Eagles

<b>Public Officer</b>	Mick Seccull
<b>Hall Booking Officer</b>	Chris Seccull
<b>Hon. Vet</b>	B. A. Bjorklund (BVSc)
<b>Hon. Solicitor</b>	Caldwell Martin and Cox (Lance Watson)
<b>Auditor</b>	Fitzpatrick & Associates
<b>Bookkeeping</b>	First Class Accounts



## Index

Admission Charges & Membership .....	2
Bull Ride .....	24
Cattle Events .....	25
Children's Races - <b>FREE</b> .....	27
Entertainment .....	3
Entry Forms .....	28
Food .....	35
Hall Hire .....	15
Horse Events .....	29
Members 2018-2019 .....	40
Membership Fees .....	2
Notices: Insurance, Exhibitors .....	2
Officials of the Society .....	1
Parking .....	2
Pavilion .....	4
Picton Showgirl .....	39
Poultry .....	16
Sheep Shearing & Classing .....	4
Show Dates .....	2
Sponsors - Thank you .....	14
Swap Meet .....	12
Ute Show .....	18
Woodchop .....	4

### Official Opening

**Our 81st Show and Showgirl presentation will be officially opened on Saturday 26th approx 3pm.**

*Front cover photos by: Rev W.A.Stewart and Peter Butler*

## Picton Show Admission Charges 2019

### Members: Free

Membership of the Society entitles you to a member's ticket which allows entry to the Show on both Saturday and Sunday and discounted entry fees to all sections of the show. Join now!

### Non Members: (GST included)

Adults	\$15.00
Aged Pensioners	\$8.00
School children	\$8.00
Children Under 5	Free
Family Pass (2 Adults + 4 School aged children)	\$50.00

## Notices

### Accident and Public Risk INSURANCE

Any accident occurring at the Show, or any other function held by the Society, must be reported to the Secretary's Office and verified during the current dates of the Show, or other function, otherwise the Society will accept no responsibility for the consideration of any claim against the Society.

#### Responsibility

**Damage through exhibits:** The Society will not be responsible for any accidents that may be caused through or by any exhibit, and it shall be a condition of entry that each exhibitor shall hold the society blameless and indemnify it against any legal proceedings arising from such accident.

**Damage to exhibits:** The society will not under any circumstances hold itself responsible for any loss or misdelivery of exhibits at the society's show or for any damage there to.

**Loss by disease:** The signing of the certificates of entry of any animal will be taken as a guarantee that the animal specified is free from disease. In case of infectious disease being spread through or by any exhibit, the exhibitor shall be held responsible.

**Appeals:** All appeals must be lodged with the Secretary, or left at the office of the Secretary, addressed to her, by the close of the show. Such protests, in writing, are to be accompanied by \$50 + GST, which may be forfeited if the protest is considered frivolous.

### Important Notice to All Exhibitors

Any exhibitors intending to bring electrical equipment to the Showground will be required to ensure that such equipment is fitted with earth leakage circuit breakers and that all electrical leads, tools and appliances have been inspected and tagged by a licensed electrical contractor.

All electrical leads must be off the ground. This is essential for the safety of yourself, fellow exhibitors and the general public and is a requirement of the O.H.&S. Act 1983 which imposes very severe penalties in the event of non-compliance with its provisions. Any exhibitors who do not comply will not be allowed to exhibit at the showground.

Please check all your electrical equipment and leads before you come to the Showground to avoid the occurrence of any difficulties.

## Membership of Picton A. H. & I. Society Inc.

Adult	\$15.00*
Aged Pensioner	\$7.50*
Juniors (under 16)	\$7.50*
Family (2 adults & up to 4 children)	\$50.00*

\* Includes GST

**Membership of the Society entitles you to a copy of the Picton Show Magazine and a Member's ticket, which will allow entry to the Show on both Saturday and Sunday.**

***New members are always welcome***

Further information may be obtained at the Secretary's Office

P.O. Box 34 Picton, NSW 2571

Phone: 4677 2485

email: [secretary@pictonshow.com.au](mailto:secretary@pictonshow.com.au)

or download a form from our Facebook page



## Show Parking

Exhibitors are requested to be on the showground by 8.30 a.m. on both days of the show. After 8.30 am, there will be limited parking available on the ground. The Society's gates will open at 6.00 a.m.

All exhibitors and those parking on the showground, are directed to comply with all the directions of the officials in charge of parking.

Parking on the grounds may become available for the evening show.

Please note: no vehicle access through the main gate (Gate 2) to Victoria Park on Saturday or Sunday.



## Show Dates 2019/20

### SOUTH COAST & TABLELANDS SHOW SOCIETIES Inc.

#### 2019

Dapto	28th September
Picton	26th-27th October
Bulli	9th-10th November (TBC)

#### 2020

Picton	24th-25th October
Canberra Royal	28th Feb - 1st March
Sydney Royal	3rd April - 14th April
Bowral	11th - 12th January
Albion Park	18th - 19th January
Kiama	24th - 25th January
Berry	31st - 1st February
Nowra	7th - 8th February
Kangaroo Valley	14th - 15th February
Milton	6th - 7th March
Goulburn	7th - 8th March
Robertson	13th - 14th March
Moss Vale	20th - 22nd March
Camden	27th - 28th March





## What's on this year?

### Saturday

- Ute Show
- Variety of Stalls, Rides & Showbags
- Main Pavilion open from 11am or after completion of judging
- Horse Events from 8.30am
- Wollondilly Kennel Club – Agility Display
- Woodchop start 3pm or at completion of Horse Events
- Campbelltown Steam and Machinery Museum
- Cattle Events
- Razorback Crank Handle Association
- Sheep Shearing & Classing 10am, 12.00pm, 2pm, 3.30pm
- Sheep Dog Demonstration
- Children's Running Races
- Snake Tails Reptile Display
- Old Kentucky Animal Farm
- Charlie the Brahman Steer
- Mechanical Bull
- Bull Ride (Saturday Night)
- Fireworks (approx 8pm)

### Sunday

- Variety of Stalls & Rides
- Main Pavilion – opens 9am
- Poultry Pavilion
- Horse Events
- Sheep Shearing
- Snake Tails Reptile Display
- Old Kentucky Animal Farm
- Charlie the Brahman Steer
- Campbelltown Steam and Machinery Museum
- Mechanical Bull



Image Rev W.A.Stewart

## BULL RIDE SATURDAY NIGHT

### Saturday Entertainment

**Night Show Sponsored by Picton Mall,  
Narellan Pools, Tahmoor Inn  
J&J Earthmoving, Khan's IGA Picton,  
O'Briens Excavations & Haulage  
Bull Ride sponsored by John Gardiner  
Plumbing, AWPM Civil Pty Ltd, All Purpose  
Water Supplies, Brian Graham Plumbing,  
Saddle Up Western Wear**

**Ute Show (judging at 10.30am)  
Woodchop (approx 3pm)  
Agility Dogs (following woodchop)  
Sheep shearing and classing demo  
BULL RIDE (approx 6.30pm)  
FIREWORKS sponsored by  
Narellan Pools (approx 8pm)**

**Picton Mall**  
Corbett Court Pty Ltd

**NARELLAN  
POOLS**

Charlie is a 12 year old ridden Brahman Steer he is a gentle giant who loves a pat.  
He is broken into saddle, Garry will be riding him around Picton Show  
and would love to meet you.





## Woodchop

### The NSW Axemen's Association WOODCHOP

**Saturday 26th October 2019**  
**3.00 pm Start**

	1st	2nd	3rd	4th
1. 300mm Underhand Handicap	\$190	\$80	\$40	\$20
2. 250mm Standing Block Handicap	\$190	\$80	\$40	\$20
3. 1st Div. Championship 275mm Standing Block	\$120	\$60	\$40	\$20
4. 2nd Div. Championship 250mm Standing Block	\$100	\$50	\$30	\$20
5. 275mm Novice'B'U/hand Handicap	\$80	\$40	\$30	\$20
6. Under 16 years 250mm Underhand Sponsored by the NSWAA	\$25	\$15	\$10	-
7. Medley Relay	\$280	-	-	-

**Entries close 11th October 2019**

**Julie Reumer: P: 0408 480 150**

**E: j.reumer@bigpond.com.au**

**Please include \$2 Administration Fee with entries**



## JG PLUMBING & CIVIL

PLUMBING | DRAINAGE | GASFITTING

SYDNEY WATER ACCREDITED  
MAJOR WORKS - WATER & SEWER



0418 675 434



john@jgplumbing.com.au

## Sheep Shearing and Classing

**Sponsored by Elders Real Estate**

**Saturday 26th October 2019**

**Brad Olson demonstrates  
Sheep Shearing and Classing**

**Times are as follows  
10am, 12.00pm, 2pm, 3.30pm**



## Pavilion

**Saturday 26th October & Sunday 27th October 2019**

**Chief Pavilion Steward:**

Susan Hill

Ph: 46 771 837, email: secretary@pictonshow.com.au

P.O. Box 34, Picton 2571

### Sponsored by Thornton Bros Roses

**Perpetual trophy for most successful**

**Local Pavilion Exhibitor**

**The Elizabeth Granger Award - Best Exhibit:**

**Spinning, Weaving and Felting**

**Perpetual trophy and prize of three months Junior Membership to the Pumphouse Gym, Picton for most successful Junior Local Exhibitor (6-under 16 years)**

**Special Thanks ...** Picton District A H & I Society would like to thank the following supporters and sponsors whose generous donations provide financial support and winner's prizes enabling "The Show to go on".

### Sponsors

Thornton Bros Roses; Tahmoor Garden Centre; Gail Apps; The Pumphouse Gym; House Warehouse - Tahmoor; Marie Wonson; The Banner Embroidery Studio; Norma Thornton, Debbie Johnson; Emily, Elisha & Emma Lule; Quarryman Surf

### General Regulations

Please read the following conditions of entry carefully before completing your entry form.

### RESPONSIBILITY

**Damage through exhibits:** The Society will not be responsible for any accidents that may be caused through or by any exhibit, and it shall be a condition of entry that each exhibitor shall hold the society blameless and indemnify it against any legal proceedings arising from such accident.

**Damage to exhibits:** The society will not under any circumstances hold itself responsible for any loss or misdelivery of exhibits at the society's show or for any damage thereto.

**Appeals:** All appeals must be lodged with the Secretary, or left at the office of the Secretary, addressed to her, by the close of the show. Such protests, in writing, are to be accompanied by \$20 + gst, which may be forfeited if the protest is considered frivolous.

**Fees:** A fee of \$1.00 per entry applies for each section unless otherwise stated. Junior Section (aged under 16 years) 50 cents per entry.

**Prizes:** Unless otherwise specified, prize money is 1st \$3.00, 2nd \$1.50. Ribbons, trophies and prizes as specified. No prize money for juniors unless specified, first and second certificates. Sponsored prizes are



correct at the time of printing and may be substituted by a prize of similar value.

A minimum of three (3) entries per class or no cash prize (except where stated) will be awarded. Prize cards will be awarded in all sections.

**Pavilion opening times:** The Pavilion will open at approximately 10am Saturday and close at 8pm. The pavilion will re-open at 9am on Sunday and close at 3pm.

**Collection of entries & prizes:** Prize money and entries to be collected between 4.00pm to 6.00pm Sunday. Perishable items will be disposed of; if not collected.

**Exhibits in the following sections must be staged on Thursday 24th October, between 1pm and 7pm.**

Needlework; Handcrafts; Handspun;  
Jams & Preserves; Art; Photography and Pot Plants  
Junior Art; School Children's Handcraft; Junior  
Photography

**Exhibits in the following sections must be staged between 1pm and 7pm Thursday 24<sup>th</sup> October or between 8 am and 2 pm Friday 25th October**

Produce; Cooking; Junior Flowers and  
Junior Cooking, Pumpkin Carving

**Flowers to be staged between 8 am and 2 pm Friday 25th October**

**No late entries will be accepted.** Please assist by staging your exhibits early on the appropriate day and providing a separate entry form for each section. Judges' and Chief Stewards' decisions are final. Identification will be attached to each exhibit by stewards.

All entries must be the bona fide work of the exhibitor and small enough to be handled by one person.

Any entry may be disqualified at the discretion of the Chief Pavilion Steward.



*The Old Kentucky Animal Farm  
Saturday and Sunday*



## SECTION 1 - PRODUCE

**Exhibits must be staged between 1pm and 7pm Thursday 24<sup>th</sup> October or between 8 am and 2 pm Friday 25th October**

If more than three entries of any one produce item are entered a separate class will be provided.

1. EGGS
  - (a) Duck Eggs
  - (b) Hen eggs White
  - (c) Hen eggs brown/coloured
  - (d) Bantam eggs
2. NUTS e.g. macadamia - 250grams on a bed of leaves.
3. FRUIT - 3 pieces same variety with stalks attached
4. Selection of garden herbs
5. Any home grown vegetable

**Best Exhibit: Champion Ribbon – \$30 Gift Voucher donated by Tahmoor Garden Centre**

## DAIRY PRODUCE

**All prize money awarded regardless of number of entries. All Milk must be Pasteurised.**

- 6 Butter – minimum 200gms
7. Yogurt plain
8. Mould Cured Cheese eg: Camembert - Cows milk
9. Soft Cheese eg: Ricotta - Cow's milk
10. Feta
11. Hard Cheese salt/brine cured eg: Feta

**Best Dairy Exhibit classes 12-17  
Champion Ribbon**

## SECTION 2 – COOKERY

**Exhibit must be staged between 1pm and 7pm Thursday 24<sup>th</sup> October or between 8 am and 2 pm Friday 25th October**

All articles intended for exhibition must be on covered plates. No cakes cooked in ring tins will be accepted. Entries not to be iced unless specified and if iced, icing on top only. Packet mix not to be used unless specified. This Section includes children 16 years of age and over.

1. SCONES any variety - plate of three (3)
2. CUPCAKES decorated
3. PATTY CAKES - iced; plate of four (4) - no added decoration or paper cases
4. DATE AND NUT LOAF
5. SLICES - plate of four (4) pieces
6. APPLE PIE - made with hand made short pastry
7. SPONGE SANDWICH - no fat- jam filled
8. MUFFINS - plate of three (3), any variety
9. SWISS ROLL
10. SHORTBREAD - four (4) pieces
11. PLAIN CAKE
12. SULTANA CAKE
13. FRUIT CAKE - boiled any mixture of fruits
14. FRUIT CAKE - dark

***Best Fruit Cake - Barbara Eagles Perpetual  
Memorial Trophy sponsored by The Razorback  
Crank Handle Association***

- 15. PLUM PUDDING - (Christmas pudding) steamed
- 16. COCONUT ICE - plate of four (4)
- 17. WHITE CHRISTMAS - plate of four (4)
- 18. RUM BALLS - plate of six (6)
- 19. BISCUITS - plate of four (4)
- 20. ROCK CAKES - plate of four (4)
- 21. ANY CAKE - iced, not previously mentioned

***Best Exhibit - Classes 1 – 21 Champion Ribbon***

**22. RICH FRUIT CAKE COMPETITION:**

Sponsored by the Agricultural Societies Council of NSW. **This recipe is compulsory for all entrants. The cake must be uncut.**

Winners at country shows will each receive a cash prize of \$25 and will be required to bake a second "Rich Fruit Cake" in order to compete in a Group Final to be conducted by each of the fourteen Groups of the Agricultural Societies Council of NSW. The winner from Picton will go onto the Group Final which will be judged in early November 2019. Exhibitors will be able to bring their cakes and wait to take them home or delegates can bring the cake.

The winners at Group level will each receive a cash prize of \$50, and are required to bake a third "Rich Fruit Cake" for the final judging at the Royal Easter Show where the winner will receive a cash prize of \$100.00.

**Note:** In any year an individual competitor may participate in only one Group Final representing a Show Society and consequently, may represent only one Group in the subsequent State Final.

**Compulsory Recipe**

**Here's what you need:**

- 250g (8 oz) sultanas
- 250g (8 oz) chopped raisins
- 250g (8 oz) currants
- 125g (4 oz) chopped, mixed peel
- 90g (3 oz) chopped red glazed cherries
- 90g (3 oz) chopped blanched almonds
- 1/3 cup sherry or brandy
- 250g (8 oz) plain flour
- 60g (2 oz) self raising flour
- 1/4 teaspoon grated nutmeg
- 1/2 teaspoon ground ginger
- 1/2 teaspoon ground cloves
- 250g (8 oz) butter
- 250g (8 oz) soft brown sugar
- 1/2 teaspoon lemon essence **OR** finely grated lemon rind
- 1/2 teaspoon almond essence
- 1/2 teaspoon vanilla essence
- 4 large eggs.

**Here's what you do:**

Mix together all the fruits and nuts and sprinkle with the sherry or brandy. Cover and leave for at least 1 hour, but preferably overnight.

Sift together the flours and spices. Cream together the

butter and sugar with the essences.

Add the eggs one at a time, beating well after each addition, then alternately add the fruit and flour mixtures. Mix thoroughly. The mixture should be stiff enough to support a wooden spoon.

Place the mixture into a prepared tin no larger than 20cm (8") and bake in a slow oven for approximately 3½-4 hours. Allow the cake to cool in the tin.

**Note:** To ensure uniformity and depending upon the size it is suggested the raisins be snipped into 2 or 3 pieces, cherries into 4-6 pieces and almonds crosswise into 3-4 pieces.

**WOOL ARTICLE/GARMENT  
STATE COMPETITION**

**Sponsored by the Brewer Family**

Competition to be Conducted at Society,  
Group & State Level

**THREE DIFFERENT TYPES OF WOOL ARTICLES  
AND/OR GARMENTS**

Picton Classes: Section 3 - Class 10; and  
Section 6 - Class 13

**CONDITIONS**

1. For the purpose of this competition the following definitions apply:
  - a) Garment: an item that can be worn e.g. dress, jacket, scarf, hat
  - b) Article: a utility item that is not worn but can be used in the home e.g. blanket; with an outfit eg. bag; for amusement eg. toy; as a decoration eg. picture etc.
2. The whole article and/or garment must be constructed of and contain a minimum of 80% wool.
3. Exhibits (articles/garments) may be knitted, crocheted, sewn, felted etc. and must be hand crafted (use of sewing machine is permitted).
4. A sample of the yarn, fabric or fibre with label must be attached to each item making up the exhibit. If a label is not available as a handspun/felted, a handwritten label with relevant details and sample will suffice.
5. An exhibit in this competition may consist of the work of one individual or a group of individuals, or an organization.
6. All three article/garments must have been completed within the 12 months prior to the local show and made by the exhibitor/s.
7. An exhibit having won at a local show may be exhibited (the same three article/garments) at the Group Final. The winning exhibit at the Group Final is then eligible to compete in the State Final.
8. An exhibitor is only eligible to represent one Society at Group level and one Group at State level.
9. An exhibit (article/garment) that has previously competed at Group level is not eligible to compete again.
10. If this class is not scheduled or attracts no entries at a local show, the Chief Pavilion Steward in consultation with the appropriate Pavilion Section Judges, may select three suitable individual exhibits and, with the exhibitors permission, enter them in the Group



judging as an exhibit representing the particular Society concerned.

11. It is the responsibility of the Group Secretary and winner to co-ordinate the transfer of the winning entry to the ASC Office in Sydney for the State judging.

**Group 5 Final** will be judged at Albion Park.

### SECTION 3 – NEEDLEWORK

No work to be exhibited, having already been shown at a previous Picton District A.H. & I. Society Show. **Exhibits in the following sections must be staged between 1pm and 8pm Thursday 24<sup>th</sup> October**

#### **Crochet and Knitting**

1. Small item e.g. handkerchief or doily
2. Baby's jacket, jumper, cardigan, dress or booties
3. Any other article not previously specified; crocheted e.g: shawl or blanket
- 3a. Any other article not previously specified; knitted e.g: shawl or blanket
4. Set of 3 garments, (booties equal 1), of same pattern.
5. Cardigan or jumper
6. Three different types of Wool Articles and/or Garments - details see State Wool Article/ Garment Competition - 1st \$12, 2nd \$8, 3rd \$5.

#### **Miscellaneous:**

7. Coat hanger - any medium
8. Dressmaking - any medium
9. Any type of lace e.g. tatting, bobbin or needle
10. Best Tea Cosy – any medium **prize of \$20 donated by Debbie Johnson**

**Best Exhibit & Champion Ribbon. Prize for Crochet, Knitting and Miscellaneous Sections**

#### **Embroidery:**

**Supported by Stitching the Banner - Embroidery Studio. All prize money awarded regardless of number of entries.**

11. Any article - machine embroidered
12. Wool Embroidery
13. Silk Ribbon Embroidery
14. Counted Thread other than Cross-Stitch
15. Stumpwork
16. Goldwork
17. Cross-Stitch
18. Canvas - tapestry, longstitch/creative.
19. Blackwork
20. Fine Embroidery using a single strand of thread
21. Surface Stitchery
22. Any technique not previously mentioned.

**Best Exhibit: Champion Ribbon, One day tutorial at Stitching the Banner Embroidery Studio**

#### **Patchwork/Quilting:**

23. Quilt - machine quilted - hand or machine pieced
24. Quilt - hand quilted - hand or machine pieced
25. Article of patchwork
26. Article of Applique
27. Patchwork Article including embroidery

**Best Exhibit: Champion Ribbon**

**PICTON**  
**MITRE 10**

**Where you still get  
friendly service**

Major stockist of  
your Building, Hardware  
and Timber needs

Large range of:

- Treated Timber Pine Products
- Fibro • Architraves • Gyprock
- Makita
- Door Locks • Villaboard
- Mouldings • Cyclone Products
- Dulux Paint • Electrical
- Pool Accessories • Ladders
- Stanley Products

**Delivery Available**

**Open 7 Days**

**Lot 1, Henry Street, Picton**

**☎ 4681 0022**

**PICTON**  
**MITRE 10**

GWEN & RUSSELL DEN

# Chellowdeen

## Florist and Classic Wedding Cars

3210 Remembrance Drive  
Bargo

46 841 235

All Floral Requirements

Wedding Specialist

Reception & Church  
Arrangements

Serving the Wollondilly area  
since 1968

Wedding car service  
1938 Cadillac Limousine  
and matching Buicks

Enjoy our very personal  
family operated services

[www.chellowdeen.com.au](http://www.chellowdeen.com.au)

### PATCHWORK QUILT GROUP COMPETITION

**Exhibits in the following section must be staged  
between 1pm and 8pm Thursday 24<sup>th</sup> October**

Rules & Regulations

1. The exhibit is to be not more than one metre on any one side (rectangle or square shape only)
2. Framed and board mounted exhibits not permitted.
3. Must be machine pieced and machine quilted.
4. Minimal Embellishments. Small amount only not to overpower patchwork.
5. Each exhibit entered must be the bona fide work of the exhibitor.
6. An exhibit having won at a Show will compete at a Group Final.
7. An exhibitor may represent only one local show at the Group Final.
8. If, for any reason, a winner is unable to compete at Group level then the second place getter is eligible to compete.
9. All work to have been completed in the last eighteen (18) months prior to its entry at a local show.
10. An exhibit that has previously competed at Group level is not eligible to compete again.
11. If this class is not scheduled or attracts no entries at a local show, the Chief Pavilion Steward in consultation with the appropriate Pavilion Section Judges, may select a suitable quilt and, with the exhibitor's permission, enter them in the Group judging as an exhibit representing the particular Society concerned.
12. Group Final location and date is to be determined by the Group. It is the responsibility of either the exhibitor or the Show Society to ensure the quilt is delivered on Judging Day and collected in an appropriate time frame after the competition.

### SECTION 4 – HANDCRAFTS

**Exhibits in the following sections must be staged  
between noon and 8pm Thursday 24<sup>th</sup> October**

1. Handmade doll
2. Piece of Pottery
3. Wooden Toy
4. Article made by recycling
5. Card Making
6. Best Dressed Doll
7. Best Soft Toy
8. Any wooden article
9. Any wooden turned
10. Any article not mentioned
11. Beaded jewellery
12. Ceramics

***Best Exhibit: Champion Ribbon and \$20  
donated by Debbie Johnson***



## SECTION 5 – SPECIAL ABILITY

Exhibits in the following sections must be staged between 1pm and 7pm Thursday 24<sup>th</sup> October

1. Ceramic
2. Needlework, wool or material work
3. Item made of wood
4. Other 3D artwork
5. 2D artwork eg: painting, drawing

## SECTION 6 – SPINNING, WEAVING AND FELTING

Exhibits in the following sections must be staged between noon and 8pm Thursday 24<sup>th</sup> October

1. 1 skein of wool not less than 50 grams
2. 1 skein of alpaca not less than 50 grams
3. 1 skein of any other natural fibre not less than 50 g
4. 1 garment or article of 100% handspun wool
5. 1 garment or article of any other handspun natural fibre
6. Handwoven article
7. Hand-felted item

**Best Exhibit: Elizabeth Granger Award & Champion Ribbon**

8. Three different types of Wool Articles and/or Garments - details Wool Article/Garment State Competition – 1st \$12, 2nd \$8, 3rd \$5.
9. **Brian Usope Memorial Award** The Most Outrageous Beanie – to be created from fibre using any technique: knitting, crochet or felting.

## SECTION 7 – WOOL FLEECE

**JUDGE: Mr Reg Scott**

Entry forms should be posted to Picton Show Society  
PO Box 34 Picton 2571 by Monday 21st October.

Entry Fee \$1.00 each entry Prizes 1st \$3, 2nd \$1.50

**Delivery:** All fleeces must be delivered to the Show Office Picton Showground between 12 noon and 8 pm Thursday 24th October. **Collection:** Fleeces must be collected from the pavilion between 4 and 6pm on Sunday 27th October. No late entries will be accepted.

### Regulations:

- a) Fleeces must be identified and have a suggested class number
- b) Fleeces should be skirted
- c) Fleeces will be judged according to the latest recommended point score system
- d) At their discretion stewards may condense or split classes

### Classes:

1. Fine wool ram fleece
2. Fine wool ewe or wether fleece
3. Medium wool ram fleece
4. Medium wool ewe or wether fleece
5. Strong wool ram fleece
6. Strong wool ewe or wether fleece
7. Rug wool ram fleece
8. Rug wool ewe or wether fleece
9. Black & Coloured fine wool ram fleece



priceline  
pharmacy



Free Club Card Membership  
Prescriptions

Webster Medication Packing  
SMS Prescription Reminder Service

Home Medication Reviews  
Maternal & Child Health Nurse

Health Check Clinic

Flu Clinics

Naturopath

Shop 12/117

Remembrance Drive, Tahmoor 2573

Phone: (02) 4681 8713

**Open 7 days**

Monday-Friday 8:30am - 7.00pm

Saturday & Sunday 9.00am - 5.00pm



# Wollondilly Trophies

Proud Supplier of Trophies for  
Picton & District Annual Show

**For all your Trophies  
and Medallions  
Engraving Specialist**

Contact: Wendy Harris

**Ph: 4683 1313**

Fax: 4683 0353

39 Castlereagh Street, Tahmoor

drink | dine | stay

# Tahmoorinn

hotel motel

Proudly supports  
Picton Show and Rodeo



Motel Units  
Double and Single

Budget Prices  
Continental Breakfast

TAB on premises - Sky Channel  
Foxtel

Bistro  
Alfresco Dining  
Blackboard Specials

Lunch & Dinner - 7 Days a Week  
Closed some public holidays

Lounge and Beer Garden

2715 Remembrance Drive, Tahmoor  
Tel: 4681 8505 Fax: 4681 0720

[www.tahmoorinn.com.au](http://www.tahmoorinn.com.au)

10. Black & Coloured fine wool ewe or wether fleece
11. Black & Coloured medium wool ram fleece
12. Black & Coloured medium ewe or wether fleece
13. Black & Coloured strong wool ram fleece
14. Black & Coloured strong wool ewe or wether fleece
15. Black & Coloured Rug wool ram fleece
16. Black & Coloured Rug wool ewe or wether fleece

**Champion & Reserve Champion Ribbons and  
\$20 donated by Debbie Johnson**

#### **Mohair Fleece Classes:**

17. Fine kid
18. Kid
19. Young goat
20. Fine hair (adult) for single fleece entries shorn in the last 12 months

**Champion & Reserve Champion Ribbons**

### **SECTION 8 – ART**

All work MUST be mounted. Adequate and secure provision for hanging must be made for all works. Additional classes may be formed where sufficient entries warrant it, on the discretion of the Judge and the Chief Steward.

**Exhibits must be staged between noon and 8pm  
Thursday 24<sup>th</sup> October**

**Special Heritage Award Sponsored by  
The Oakes Heritage Society**

**\$25.00 for a Painting and \$25.00 for a Drawing  
depicting an Heritage theme.**

1. Landscape- any medium
2. Portrait - any medium
3. Oil- any subject
4. Acrylic - any subject
5. Mixed media- any subject
6. Drawing: pencil, ink, charcoal, pastel - any subject

**Best Exhibit: Champion Ribbon**

**Special Award: The Norma Ross Memorial Award  
for a painting and \$100 Prize sponsored by the  
Norma Ross Exhibition Group to be chosen by  
Art Judge and Chief Pavilion Steward.**

### **SECTION 9 – FLOWERS**

**Exhibits in the following sections must be staged  
between 8am and 2pm Friday 25<sup>th</sup> October**

**Sponsored by Thornton Bros Roses**

**Roses:** (if possible, please label Rose variety for public information)

1. Three (3) red roses - no buds
2. Three (3) pink roses - no buds
3. Three (3) white roses - no buds
4. Three (3) roses - any colour not previously mentioned, no buds
5. Vase of Roses - bud to full bloom, 4 stages, one variety.
6. Vase of Decorative Roses, any variety, 4-6 cuts
7. Vase of Floribunda Roses – one variety, 4-6 cuts
8. Vase of Miniature Roses - any variety, 4-6 cuts

**Best Exhibit: Champion Ribbon & \$100 donated by  
Thornton Bros Roses**



9. One (1) Rose - Exhibition **\$25 donated by Marie Wonson**  
**Champion Ribbon and \$30.00 Voucher donated by Tahmoor Garden Centre**

#### Miscellaneous Flowers:

10. Container of Daisies - any variety
11. Container of Dutch Iris - no less than 3 cuts
12. Container of Bearded Iris - no less than 3 cuts
13. Container of Sweetpeas - no less than 3 cuts
14. Container of Flowering Shrub - any variety
15. Container of Geraniums - no less than 3 cuts
16. Bowl of Pansies - mixed colours
17. Best Bloom or Blooms - not previously mentioned
18. Best Waratah (Single) - Red or White
19. Best Container of Australian Natives - NO Proteas please
20. Best Container of Proteas

**Best Exhibit: Champion Ribbon & \$100 donated by Thornton Bros Roses**

#### Decorative Flowers:

21. Arranged Basket of Flowers
22. Centre Piece - for dining table
23. Container of Mixed Flowers - frontal effect
24. Container of Mixed Flowers - all- around effect
25. Arrangement of Seven (7) Flowers or less
26. Float Bowl of Flowers or Flower to Float
27. Novelty Container - any flowers
28. Dry Arrangement
29. Foliage Arrangement

**Best Exhibit: Champion Ribbon + & \$100 donated by Thornton Bros Roses**

### SECTION 10 – POT PLANTS

Exhibits in the following sections must be staged between 8am -2pm Friday 25<sup>th</sup> October

1. Pot Plant in Flower
2. Indoor Plant
3. Fern - any variety
4. Foliage - pot plant, any variety
5. Succulent
6. Bonsai Specimen
7. African Violet
8. Cactus
9. Hanging Fern - any variety
10. Potted Plants in most unusual container
11. Miniature Indoor Plant - not to exceed 150mm including pot
12. Other potted plant not previously mentioned

**Best Exhibit: Champion Ribbon & \$100 donated by Thornton Bros Roses**

### SECTION 11 – AMATEUR PHOTOGRAPHY

Exhibits in the following sections must be staged between 1pm and 7pm Thursday 24<sup>th</sup> October

Prints must be unframed and mounted on cardboard slightly larger than photo. Minimum size 100mm x 150mm (4"x6"), maximum size 405mm x 510mm (16"x20"), excluding border. Digital and computer enhanced prints are accepted only in Special Class and cannot compete for Group Champion of Champions Competition.

## pumphouse gym

PICTON



#### Fully equipped Gym

including:  
 Free weights  
 Pin weights  
 Cardio equipment  
 Cardio Theatre  
 RPM/Cycle Studio

#### Licensed Les Mills Centre

BodyVive  
 BodyPump  
 BodyAttack  
 BodyCombat  
 BodyBalance

#### Friendly personal service

#### Group fitness classes

#### Active Over 50s program

#### Rehabilitation

#### Weight Loss

#### Diet & Supplement Advice

#### Massage

#### Thai Massage

#### Taekwondo/KindyKwondo

#### Childminding

#### Memberships Available

#### Casual Members Welcome



Open 7 Days  
 1st Floor, 150-158 Argyle Street  
 PICTON N5W 2571

Ph: 4677 2000  
 Fax: 4677 1000



# Picton Swap Meet

Sun 7th June 2020  
153 Menangle St Picton  
(next to Victoria Oval)

Early set up available on Sat  
For further info  
email: [Secretary@pictonshow.com](mailto:Secretary@pictonshow.com)

## Picton Vet Hospital

199 Menangle Street, Picton NSW 2571

Bo Bjorkund

**Ph: 4677 2288**

[bo@pictonvet.com.au](mailto:bo@pictonvet.com.au)

24 Hour Emergency  
Service



1. Historical Building or Site - colour or B & W
2. Local View, Wollondilly Shire - colour or B & W
3. Water Scene - colour or B & W
4. Portrait - colour
5. Portrait - B & W
6. Child Study - colour
7. Child Study - B & W
8. Animal, Bird or Insect Study - colour
9. Animal, Bird or Insect Study - B & W
10. Sunrise or Sunset - colour
11. Landscape - colour or B & W
12. Action Shot, Sport or Other - colour
13. Action Shot, Sport or Other - B & W
14. Flower/s Study - colour
15. Flower/s Study B & W
16. People - colour
17. People - B & W
18. Best Photo of Event from Picton Show
19. Open Class - colour
20. Open Class - B & W

**Best Exhibit Colour: Champion Ribbon**  
**Best Exhibit Black & White: Champion Ribbon**  
**and \$25 voucher donated by Quarryman Surf**

### Special Amateur Photography Class:

21. Open Class - Photoshop altered photography

### South Coast & Tablelands Show Societies Inc. "Champion of Champions" Photographic Competition

The champion black and white and colour print, any subject, are eligible for entry into a competition conducted by South Coast and Tablelands Show Societies Inc.

Prize money for champion of champions photograph at Group 5 judging: 1st \$50, 2nd \$30 and 3rd \$20 donated by **Showday**.

Entry in the Champion of Champions Competition may only be entered from one show society. South Coast and Tablelands Show Societies judging will take place at Camden and photos will be displayed at Camden Show

### SECTION 13 – JAMS & PRESERVES

**Exhibits in the following sections must be staged between 1pm and 7pm Thursday 24<sup>th</sup> October**

1. Strawberry Jam
2. Lemon Butter
3. Any other butter (must be named)
4. Plum Jam
5. Blackberry Jam
6. Three fruits Marmalade
7. Marmalade - any other variety
8. Apricot Jam
9. Any other Jam
10. Any other Jelly
11. Any other spread
12. Fruit - preserved in syrup
13. Preserved Vegetables - any variety
14. Pickles - any variety
15. Relish - any variety
16. Chutney - any variety
17. Sauce - sweet (must be named)
18. Sauce - savoury (must be named)



19. Savoury Jelly eg: mint

**Best Exhibit: Champion Ribbon and \$25 donated by Marie Wonson**

## SECTION 21 – PUMPKIN CARVING

- The chief steward reserves the right to not accept any item deemed offensive or in bad taste
- If illuminated there must be no flame e.g. candle. Battery powered lights acceptable.
- No name of entrant may be displayed.
- Pumpkin work may have an inoffensive title displayed.
- Unless otherwise specified entry must not have additives e.g. paint, craft items
- Pumpkins must be stable when on display.

**Exhibits must be staged between noon and 8pm  
Thursday 24<sup>th</sup> October or between 8 am and 2 pm.  
Friday 25<sup>th</sup> October**

1. Halloween theme Pumpkin
2. Celebrity Pumpkin
3. Enhanced Pumpkin – entry may include other decorative items for artistic embellishment i.e. wool, toothpicks, ink, paint.

**Champion Ribbon “Best Carved Pumpkin” plus \$20  
donated by The Hill Family**

## JUNIOR SECTION Section 14 - 19

No prize money for Junior Section unless otherwise specified.

**Perpetual Trophy for the Most Successful Junior Exhibitor (6 - under 16 years) + Prize of 3 months Junior Membership to the Pumphouse Gym, Picton**

**Age must be specified on each entry.**

## SECTION 14 – Home Grown FRUIT, VEGETABLES, PRODUCE & FLOWERS

**Sponsored by Thornton Bros Roses**

**Exhibits in the following sections must be staged between noon and 8pm Thursday 24<sup>th</sup> October or between 8 am. and 2 pm. Friday 25<sup>th</sup> October (Juniors only: please specify age on entry) Prize money of \$5 per class.**

1. Arrangement of Flowers
2. Arrangement of Greenery
3. Novelty Figure Made From Vegetables
4. Decorated Egg. Egg may be boiled or blown and decorated with any medium.
5. Miniature garden or terrarium

**Best Exhibit: Ribbon & \$25 donated by Thornton Bros Roses**

## SECTION 15 - HANDCRAFT

**Exhibits must be staged between noon and 8pm  
Thursday 24<sup>th</sup> October  
(Juniors only: please specify age on entry)**

1. Piece of Metal Work



**STEPHEN MAITZ & ASSOCIATES**  
Solicitors and Conveyancers



*Friendly Professional  
Service,  
at a Reasonable  
Price*

**We can help you with:**

- \* Conveyancing
- \* Family/De facto Law
- \* Wills & Deceased Estates
- \* Criminal Law/Drink Driving
- \* All Court Appearances
- \* Sale or Purchase of Business
- \* Leases
- \* Litigation matters
- \* Debt recovery
- \* Insurance disputes

**For all other matters, please  
enquire.**

**Your initial 20 minute  
appointment is free.**

**After hours appointments available  
by request.**

**117 Argyle Street, Picton  
Telephone 4677 3080**

Liability limited by a scheme approved under  
Professional Standards Legislation

**Picton District A.H.& I.  
Society would like to  
thank the sponsors of this  
years show**

Picton Mall - Corbett Court  
Pty Ltd

Picton Sand & Soil

Narellan Pools

John Gardiner Plumbing

Natural Landscaping

AWPM Civil Pty Ltd

Picton Bowling Club

Thornton Bros Roses

Bradcorp

Alpha IT

Shiels Legal

Elders Real Estate - Picton

Mills Haulage

All Purpose Water Supplies

Khan's Super IGA

J & J Earth Moving

Tahmoor Inn

O'Briens Excavations & Haulage

Alicia's In Spa Therapies

Saddle Up Western Wear-  
Thirlmere

Wollondilly Mechanical

Jim's Handyman

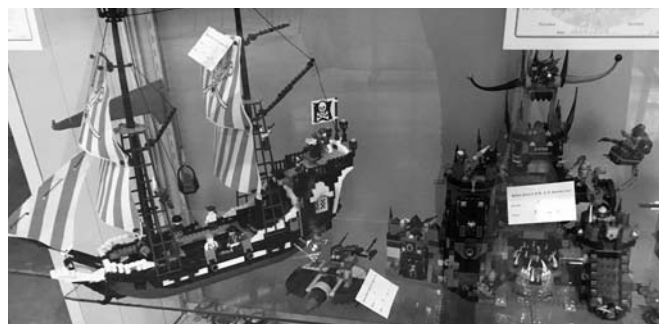
The Chef's Table

Carpenter Partners Real Estate

Brian Graham Plumbing

BalloonIt - Thirlmere

Tahmoor Smash Repairs



2. Piece of Beadwork
3. A 3D item - including pottery & woodwork
4. Sewn item eg: patchwork
5. Tapestry/embroidery
6. Hand-made Toy
7. Papercraft
8. Lego - Kit Form (Cabinet will be supplied)
9. Lego - Non-Kit Form Design (Cabinet will be supplied)
10. Meccano
11. Any article not mentioned

**Champion Handcraft Exhibit: Champion Ribbon &  
\$20 donated by Gail Apps**

#### SECTION 15A - SPECIAL ABILITY

1. Needlework
2. Pottery
3. Any other article

**Best Exhibit: \$20 donated by Deanne Lule**

#### SECTION 16 – COOKING

**For Juniors aged under 16 years.  
(Please specify age on Entry)**

**Exhibits in the following sections must be staged  
between noon and 8pm Thursday 24<sup>th</sup> October or  
between 8 am and 2 pm Friday 25<sup>th</sup> October**

**Please note: Limit of two entries per exhibitor per  
class. No packet cake unless specified.**

1. Plate of Three (3) Scones
2. Novelty Cake (cooked by child under 10 years)
3. Novelty Cake (cooked by child 10 yrs and over)
4. Plate of Three (3) Chocolate Crackles/ Spiders/  
Cornflake Honey Snaps or mixed
5. Cake - any variety not iced
6. Packet Cake - any variety
7. Biscuits or Slices - any variety
8. Muffins
9. Decorated cupcake

**Best Exhibit: Champion Ribbon &  
\$20 donated by Gail Apps**

**CWA Special Awards  
\$10 First Prize, \$5.00 Second Prize  
Plate of 4 scones using CWA provided recipe  
Plate of 4 biscuits using CWA provided recipe**

#### SECTION 17 – ART

**Exhibits must be staged between noon and 8pm  
Thursday 24<sup>th</sup> October. All framed work must have  
provision for hanging or cannot be accepted.**

1. Pre-school 2D artwork

2. Painting - by exhibitor under 10 yrs of age
3. Painting - by exhibitor under 16 yrs of age
4. Drawing - by under 8yrs
5. Drawing - by exhibitor under 16 years
6. Computer generated picture ie: MSPaint, TuxPaint or similar

**Best Exhibit: under 10 years old: Champion Ribbon & \$10 donated by Emily Lule**

**Best Exhibit: 10 years and Over: Champion Ribbon & \$10 donated by Emily Lule**

## SECTION 18 – PHOTOGRAPHY

**Exhibits must be staged between 1pm and 7pm Thursday 24<sup>th</sup> October.** Black and White or Colour Photographs accepted for this Section.

1. Animal Study – Exhibitor Under 10 yrs
2. Child Study - Exhibitor Under 10 yrs
3. Water Scene - Exhibitor Under 10 yrs
4. Landscape - Exhibitor Under 10 yrs
5. Animal Study - Exhibitor 10 yrs and Over
6. Child Study - Exhibitor 10 yrs and Over
7. Water Scene - Exhibitor 10 yrs and Over
8. Landscape - Exhibitor 10 yrs and Over

**Best Junior Photograph Under 10 Years: Champion Ribbon & \$10 donated by Elisha Lule**

**Best Junior Photograph 10 Years & Over: Champion Ribbon & \$10 donated by Emma Lule**

## Hall or Pavilion Hire



**Picton A. H. & I. Society's Hall, Showground and Poultry Pavilion are available to the public for hire**

For further information please contact:-

Agricultural Hall: Chris Seccull Ph: 4681 8060

Poultry Pavilion: The Secretary Ph: 4677 2485

All other enquiries to Secretary Ph: 4677 2485

or [secretary@pictonshow.com.au](mailto:secretary@pictonshow.com.au)

**Alted Printing**  
& Stationery

Your local printer servicing the  
Community since 1982

All printing done on the premises  
to provide the personal service you  
deserve

- ◆ Receipt & Invoice Books
- ◆ Laminating up to Poster Size

◆ Business Cards

◆ Labels

◆ Brochures

◆ Letterheads

◆ Rubber Stamps

◆ Photocopying

◆ Graphic Art Design

◆ Short Run Books -

ideal for family history and historical  
books

◆ Short Run Colour Printing  
as well as Full Colour Brochures

◆ Quotes and uploads available online

Shop 9/ 150-158 Argyle Street Picton

**Ph 4677 1317**

email: [ted@altedprinting.com.au](mailto:ted@altedprinting.com.au)

[www.altedprinting.com.au](http://www.altedprinting.com.au)

**Alted Printing**  
Est. 1982





## FOR QUALITY STOCKFEED & PRODUCE

110 Cedar Creek Road, Thirlmere  
Ph: **02 46 818 251**

31 Wonga Road, Picton  
Ph: **02 46 770 093**

**Find us on Facebook**

- Pet Food •Fresh Pet Meat
- Stockfeeds •Saddlery
- Wormers •Supplements
- Fencing & Garden Supplies
- Elgas

***Call us about our regular Delivery Service***

### OPEN 6 DAYS

Weekdays 8:30am - 5:30pm

Saturday 8:00am - 2:00pm

**Closed Sundays and Public Holidays**

**Proudly supporting Picton  
Show for over 20 years**



## Poultry

**Chief Steward:** William Linger  
**All exhibits to be penned by 8.30 am  
on Sunday 27th October 2019**

**Entries Close:** Saturday 11th October 2019  
**Unpenning will begin at 4.00 pm  
on Sunday 27th October 2019**

**Entry Fee:** \$2.00 per class non-members  
\$1.50 per class members

**Prize Money:** First \$2.00 Second \$1.00

**Email entries to:** [secretary@pictonshow.com](mailto:secretary@pictonshow.com) or  
**post entries To:**  
William Linger  
49 Pitt Street Tahmoor 2573 NSW

### AWARDS

**Sponsored by Thirlmere Meats**

### AWARDS LIST

**Champion Bird of Show:** Trophy + Sash.

**Reserve Champion Bird of Show:** \$10 Prize + Sash

**Champion Waterfowl:** \$10 Prize + Sash

**Champion Softfeather in Show:** \$10 Prize + Sash

**Champion Hardfeather in Show:** \$10 Prize + Sash

**Champion Breed Pair:** \$10 Prize + Sash

**Champion Softfeather Large Male:** \$10 Prize + Sash

**Champion Softfeather Large Female:** \$10 + Sash

**Champion Hardfeather Large Male:** \$10 Prize + Sash

**Champion Hardfeather Large Female:** \$10 + Sash

**Champion Softfeather Bantam Male:** \$10 + Sash

**Champion Softfeather Bantam Female:** \$10 + Sash

**Champion Hardfeather Bantam Male:** \$10 + Sash

**Champion Hardfeather Bantam Female:** \$10 + Sash

**Champion Waterfowl Male:** \$10 Prize + Sash

**Champion Waterfowl Female:** \$10 Prize + Sash

**Champion Junior Classes:** \$10 Prize + Sash.

**Champion Inter-School Point Score:** Perpetual Trophy remains the property of Picton Show Society. A smaller trophy will be awarded as well a \$10 prize plus a Sash.

continued...p23

### SOFTFEATHER LARGE

1. Australorp Male
2. Australorp Female
3. Ancona Male
4. Ancona Female
5. Rhode Island Male
6. Rhode Island Female
7. Orpington Male
8. Orpington Female

9. Langshan A.C. Male
10. Langshan A.C. Female
11. Wyandotte, White Male
12. Wyandotte, White Female
13. Wyandotte, A.O.C. Male
14. Wyandotte, A.O.C. Female
15. A.O.V. Softfeather Male
16. A.O.V. Softfeather Female
17. Softfeather Pair
18. Silkie White Male
19. Silkie White Female
20. Silkie AOC Male
21. Silkie AOC Female

### **HARDFEATHER LARGE**

22. O.E.G. Black Red Male
23. O.E.G. Partridge Female
24. O.E.G. Pile Male
25. O.E.G. Pile Female
26. O.E.G. Blue Red Male
27. O.E.G. Blue Red Female
28. O.E.G. A.O.C. Male
29. O.E.G. A.O.C. Female
30. Pit Game Male
31. Pit Game Female
32. Australian Game Male
33. Australian Game Female
34. A.O.V. Hardfeather Male
35. A.O.V. Hardfeather Female
36. Hardfeather Pair

### **SOFTFEATHER BANTAM**

37. Ancona Male
38. Ancona Female
39. Australorp Male
40. Australorp Female
41. Langshan A.C. Male
42. Langshan A.C. Female
43. Leghorn A.C. Male
44. Leghorn A.C. Female
45. Pekin Black Male
46. Pekin Black Female
47. Pekin A.O.C. Male
48. Pekin A.O.C. Female
49. Plymouth Rock Male
50. Plymouth Rock Female
51. Rhode Island A.C. male
52. Rhode Island A.C. Female
53. Rosecomb A.C. Male
54. Rosecomb A.C. Female
55. Sussex male
56. Sussex Female
57. Wyandotte White Male
58. Wyandotte White Female
59. Wyandotte A.O.C. Male
60. Wyandotte A.O.C. Female
61. A.O.V. Softfeather Male
62. A.O.V. Softfeather Female
63. Softfeather Bantam Pair



### **HARDFEATHER BANTAM**

64. Australian Game A.C. Male
65. Australian Game A.C. Female
66. Indian Game A.C. Male
67. Indian Game A.C. Female
68. Modern Game Black Red Male
69. Modern Game Black Red Female
70. Modern Game Pile Male
71. Modern Game Pile Female
72. Modern Game Duckwing A.C. Male
73. Modern Game Duckwing A.C. Female
74. Modern Game Wheaten Female
75. Modern Game A.O.C. Male
76. Modern Game A.O.C. Female
77. O.E.G. Black Red Male
78. O.E.G. Partridge or Wheaten Female
79. O.E.G. Blue Red Male
80. O.E.G. Blue Red or Blue Tail Female
81. O.E.G. Duckwing Male
82. O.E.G. Duckwing Female
83. O.E.G. Spangle Male
84. O.E.G. Spangle Female
85. O.E.G. A.O.C. Male
86. O.E.G. A.O.C. Female
87. A.O.V. Hardfeather Male
88. A.O.V. Hardfeather Female
89. Hardfeather Bantam Pair

### **WATERFOWL**

90. Muscovy White Male
91. Muscovy White Female
92. Muscovy A.O.C. Male
93. Muscovy A.O.C. Female
94. Indian Runner White Male
95. Indian Runner White Female
96. Indian Runner A.O.C. Male
97. Indian Runner A.O.C. Female
98. Pekin Male
99. Pekin Female
100. Campbell A.C. Male
101. Campbell A.C. Female
102. Mallard White Male
103. Mallard White Female
104. Mallard A.O.C. Male
105. Mallard A.O.C. Female
106. A.O.V. Male
107. A.O.V. Female
108. Waterfowl Pair

### **JUNIOR CLASSES**

109. Softfeather Large Male
110. Softfeather Large Female
111. Hardfeather Large Male
112. Hardfeather Large Female
113. Softfeather Bantam Male
114. Softfeather Bantam Female
115. Hardfeather Bantam Male
116. Hardfeather Bantam Female
117. Waterfowl Male
118. Waterfowl Female

*continued....*

# PICTON UTE SHOW

SATURDAY 26TH OCTOBER 2019  
UTES TO BE ON GROUND by 9am sharp  
FOR JUDGING at 10.30am approx  
Entry fees - Entry at the gate to the Show  
First category free,  
any categories after that \$5.00 each

**Ribbons and \$2000 worth  
of cash prizes to be won**

**Major Sponsor**

**NATURAL  
LANDSCAPING**

Also sponsored by  
**Mills Haulage, Jim's Handyman,  
Wollondilly Mechanical Services,  
Chef's Table-Picton Bowling Club,  
Carpenter Partners Real Estate-  
Tahmoor, TSR Mechanical-Tahmoor**

## Categories

**BNS Ute, Classic Ute,  
Best Street Ute, Chick Street Ute,  
Best Ford Classic Modified,  
Best 4x4 Ute, Chicks Country Style,  
Best Holden, Rural Ute,  
Best Other Ute, Tradies Ute,  
Themed Ute, Presidents Choice  
Grand Champion**

**For further information contact  
Jess 0427 763 999  
Jeremy 0438 999 500**



## SCHOOL CLASSES STUDENTS TO 18 YRS

119. Softfeather Large Male
120. Softfeather Large Female
121. Hardfeather Large Male
122. Hardfeather Large Female
123. Softfeather Bantam Male
124. Softfeather Bantam Female
125. Hardfeather Bantam Male
126. Hardfeather Bantam Female
127. Waterfowl Male
128. Waterfowl Female

## BACKYARD BIRDS

129. Prettiest Bird
130. Best Presented Bird
131. Biggest Bird
132. Smallest Bird
133. Best Behaved Bird
134. Most Coloured Bird



**PICTON  
SAND & SOIL**

Proudly Supplying Wollondilly & Surrounds all your:

- Sands ● Aggregates ● Mulches
- Soils ● Decorative Pebbles ● Sandstone



Picton Sand and Soil has been locally owned and operated since its opening in 2002. Proudly supporting Wollondilly's Community for over 15 years. Call us today and speak to one of our friendly team members about how we can assist you with your landscape & building needs.

**PH: 4677 1333**



*Picton Mall*

# Best Shopping Local



# Wollondilly

take a closer look...

[visitwollondilly.com.au](http://visitwollondilly.com.au)

## Visitor Information



Pick up your free map and guide from:

- Wollondilly Shire Council, Picton
- Wollondilly Library, Picton
- NSW Rail Museum, Thirlmere

Or discover Wollondilly online at [visitwollondilly.com.au](http://visitwollondilly.com.au) or scan the QR code on your phone.

## Scan Website



## Wisdom Saver. Even saves you time for what matters most.

When you hit 55, you start to appreciate life a little more. And you focus more on things that matter. An IMB Wisdom Saver account not only helps you save money, but time as well. Make real time payments with OSKO® and shop instantly and safely with Apple Pay, Samsung Pay, Google Pay, Fitbit Pay and Garmin Pay.

**And you can open it now in under 5 minutes**

**Come and visit the team at IMB Picton**  
Shop 1A, 148 Argyle Street  
Ph: 4677 6800

Important information: This advice is general advice only and does not take into account your objectives, financial situation or needs. You should consider the Product Disclosure Statement available from IMB before making a decision about this product. © Osko and logo is a registered trademark of BPAY Pty Ltd ABN 69 079 137 518. Apple Pay is a trademark of Apple Inc., registered in the U.S. and other countries. Google Pay is a trademark of Google LLC. Samsung Pay is a trademark or registered trademark of Samsung Electronics Co., Ltd. Fitbit Pay™ is a trademark of Fitbit Inc. in the U.S. and other countries. Garmin Pay is a trademark of Garmin Ltd. or its subsidiaries. IMB Ltd trading as IMB Bank. ABN 92 087 651 974. AFSL/Australian Credit Licence 237 391.





# THAT OFFICE PLACE

*the right products at the right price*

All your Stationery Needs  
Plan & Wide Format Printing  
Copy, Fax & Print Supplies  
Digital Printing      Office Supplies  
Laminating              School Supplies  
Comb Binding          Photocopying

Open 5 <sup>1</sup>/<sub>2</sub> days

Shop 2 & 3, 100 Argyle Street Picton Phone: 4677 3322

E: [sales@thatofficeplace.com.au](mailto:sales@thatofficeplace.com.au)

*The most trusted name in Camden for over 150 years*



**Inglis**  
PROPERTY MACARTHUR

4655 3322

RESIDENTIAL | RURAL | COMMERCIAL | INDUSTRIAL | RETAIL | SALES, LEASING & MANAGEMENT





P I C T O N   S H O W   2 0 1 8



# DISCOUNT DRUG STORES

*more than just low prices*

**Picton Mall, 9 Margaret Street, Picton**  
**OPEN 7 DAYS • Phone 02 4677 1294**

**MEDICATION PACKS • BLOOD PRESSURE MONITORING  
IN STORE MEDICATION REVIEWS • NDSS ACCESS POINT  
PRESCRIPTION FILING • SAFETY NET MANAGEMENT**



**Fresh Deli**

**Fresh Meat**

**Fresh Daily Bakery**

**Fruit & Veg**

**Home Delivery**

**Online Shopping**

Fully Air-conditioned  
for your comfortable shopping

**Open 7 days**

**Picton 46 772 922** email: [picton@khangroup.com.au](mailto:picton@khangroup.com.au)  
address: 100 Argyle Street, Picton 2571

**Bargo 46 842 434** email: [bargo@khangroup.com.au](mailto:bargo@khangroup.com.au)  
address: Cnr Rainside Ave & Noongah St, Bargo 2574

**Robert & Shane Khan**  
[www.khangroup.com.au](http://www.khangroup.com.au)

***“Proudly serving the community”***

# Picton Show BULL RIDE

## 26th OCTOBER 2019

PICTON SHOWGROUND • 1ST PERFORMANCE 6.30PM

\$1500 Open Bull Ride - Entry \$128.50 • AB \$55

\$1000 Novice Bull Ride - Entry \$107.70 • AB \$55

\$500 Open Steer Ride - Entry \$58.20 • AB \$22



**MECHANICAL BULL, PLENTY FOOD STALLS, SIDE SHOWS,  
FIREWORKS, SADDLE UP WESTERN WEAR, NO BYO.**

**STOCK SUPPLIED BY: GEORGE HEMPENSTALL & DIAMOND H**

*All competitors pay at gate, money refunded at office with tickets.*

**SPONSORS: Narellan Pools, A.W.P.M. John Gardiner Plumbing,  
Picton Sand & Soil, Saddle Up Western Wear, Brian Graham Plumbing  
All Purpose Water Supplies**

**CONTACT:**

**MICK SECCULL - 0402 265 356**

**OR CHRIS SECCULL - 0429 818 060**

*Committee is registered for GST.*

*All prizemoney paid is inclusive of GST where applicable.*



PRE-KINDERGARTEN TO YEAR 12

EXCELLENCE ENDURANCE ETERNITY



### Wollondilly Anglican College

3000 Remembrance Drive, Tahmoor NSW 2573

Telephone: 4684 2577 Email: [pa@wac.nsw.edu.au](mailto:pa@wac.nsw.edu.au)

Website: [www.wac.nsw.edu.au](http://www.wac.nsw.edu.au)

ENQUIRE NOW FOR 2020  
AND BEYOND

WVAC1360 Picton ShowJAS





# Beef Cattle

**Saturday 26th October 2019**

**Judging to commence at 9.00am**

**Junior judging of cattle 9.00am**

**Breed Classes 9.30am**

**Entry fee per class \$10 non-members \$7 members**

**Chief Cattle Steward:** Kaitlyn Munro

Mobile: 0408 186 666

Email: [pictonshowcattle@gmail.com](mailto:pictonshowcattle@gmail.com)

All emails that are sent to the Chief Steward need to have the subject line 'Cattle Picton Show 2019'

## CONDITIONS OF ENTRY

- All animals must come from a herd and property where Johne's Disease has not been known or suspected for 5 years
- Cattle from both assessed and non-assessed herds will be accepted
- Cattle are to be on the grounds before 8.00am
- Age as at the 14th October 2019
- All cattle must be led into the judging ring
- White coats or breed uniform to be worn in all classes
- All cattle exhibited must comply with the health regulations of NSW Dept Agriculture
- All animals over 6 mths of age and not being exhibited with the dam must be paraded with a nose grip. Bulls over 9mths of age must have a nose ring fitted
- Exhibitor's must supply their own bedding
- All animals must be registered with their respective breed society
- All cattle, including calves on cows, must be tested for Pestivirus (BVD) and results of the tests forwarded with your entries.
- **ENTRIES CLOSE 14TH OCTOBER**

**Many thanks to our generous sponsors**

**Major Sponsor**

**Alpha IT Solutions**

Walshs Livestock, Kia Ora Limousins/Hayters Transport

The Meat Man, Sunset Park Limousins

Limitless Shows Supplies, Sydney Regional Hereford Group, Gail Apps

## LIMOUSIN

Class 1 Bull 6 mths and under 12 mths

Class 2 Bull 12 mths and under 16 mths

Class 3 Bull 16 mths and under 20 mths

**Junior Champion Bull \$20**

**Reserve Junior Champion Bull \$10**

Class 4 Bull 20 mths and under 24 mths

Class 5 Bull 24 mths and under 30 mths

Class 6 Bull over 30 mths

**Senior Champion Bull \$20**

**Reserve Senior Champion Bull \$10**

Class 7 Female 6 mths and under 12 mths

Class 8 Female 12 mths and under 16 mths

Class 9 Female 16 mths and under 20 mths

**Junior Champion Female \$20**

**Reserve Junior Champion Female \$10**

Class 10 Female 20 mths and under 24 mths

Class 11 Female 24 mths and under 30 mths

Class 12 Female over 30 mths

**Senior Champion Female \$20**

**Reserve Senior Champion Female \$10**

## SIMMENTAL

Class 13 Bull 6 mths and under 12 mths

Class 14 Bull 12 mths and under 16 mths

Class 15 Bull 16 mths and under 20 mths

**Junior Champion Bull \$20**

**Reserve Junior Champion Bull \$10**

Class 16 Bull 20 mths and under 24 mths

Class 17 Bull 24 mths and under 30 mths

Class 18 Bull over 30 mths

**Senior Champion Bull \$20**

**Reserve Senior Champion Bull \$10**

Class 19 Female 6 mths and under 12 mths

Class 20 Female 12 mths and under 16 mths

Class 21 Female 16 mths and under 20 mths

**Junior Champion Female \$20**

**Reserve Junior Champion Female \$10**

Class 22 Female 20 mths and under 24 mths

Class 23 Female 24 mths and under 30 mths

Class 24 Female over 30 mths

**Senior Champion Female \$20**

**Reserve Senior Champion Female \$10**

## SMALL BREEDS

Class 25 Bull 6 mths and under 20 mths

Class 26 Bull 12 mths and under 16 mths

Class 27 Bull 16 mths and under 20 mths

**Junior Champion Bull \$20**

**Reserve Junior Champion Bull \$10**

Class 28 Bull 20 mths and under 24 mths

Class 29 Bull 24 mths and under 30 mths

Class 30 Bull over 30 mths

**Senior Champion Bull \$20**

**Reserve Senior Champion Bull \$10**

**Alpha**  
IT SOLUTIONS

[www.alphait.com.au](http://www.alphait.com.au)

02 8071 4180

Solicitors



Caldwell  
Martin  
Cox

Your Trusted Advisor

## **CAMDEN & WOLLONDILLY'S LEADING LAW FIRM**

Providing Excellent Service, Professionalism  
and Integrity For Over 65 Years

### **LEGAL EXPERTS IN**

- Property
- Family Law
- Estates
- Wills
- Business
- Litigation
- Court Matters
- Compensation

CAMDEN - NARELLAN - PICTON

**02 4651 4800**

**[www.cmcox.com.au](http://www.cmcox.com.au)**

**[help@cmcox.com.au](mailto:help@cmcox.com.au)**



Class 31 Female 6 mths and under 12 mths  
Class 32 Female 12 months and under 16 mths  
Class 33 Female 16 mths and under 20 mths

**Junior Champion Female \$20**

**Reserve Junior Champion Female \$10**

Class 34 Female 20 mths and under 24 mths

Class 35 Female 24 mths and under 30 mths

Class 36 Female over 30 mths

**Senior Champion Female \$20**

**Reserve Senior Champion Female \$10**

### **ALL OTHER BREEDS**

Class 37 Bull 6 mths and under 20 mths

Class 38 Bull 12 mths and under 16 mths

Class 39 Bull 16 mths and under 20 mths

**Junior Champion Bull \$20**

**Reserve Junior Champion Bull \$10**

Class 40 Bull 20 mths and under 24 mths

Class 41 Bull 24 mths and under 30 mths

Class 42 Bull over 30 mths

**Senior Champion Bull \$20**

**Reserve Senior Champion Bull \$10**

Class 43 Female 6 mths and under 12 mths

Class 44 Female 12 months and under 16 mths

Class 45 Female 16 mths and under 20 mths

**Junior Champion Female \$20**

**Reserve Junior Champion Female \$10**

Class 46 Female 20 mths and under 24 mths

Class 47 Female 24 mths and under 30 mths

Class 48 Female over 30 mths

**Senior Champion Female \$20**

**Reserve Senior Champion Female \$10**

### **LED OPEN STEER**

Class 49 Led Open Steer (showing no permanent teeth) or Trade Heifer (heifer not to be entered in any other class)

### **INTERBREED CLASSES**

Class 50 Led Interbreed Calf. (Calf must have been exhibited on its Dam in the Breed classes)

Class 51 Pair of heifers under 24 months (Must not have calved) owned by the one exhibitor

Class 52 Pair of bulls under 24 months owned by the one exhibitor

Class 53 Breeder's Group to consist of 3 head both sexes to be represented owned and bred by the one exhibitor.

Class 54 **JUNIOR CHAMPION INTERBREED BULL \$50**

Class 55 **SENIOR CHAMPION INTERBREED BULL \$50**

Class 56 **GRAND CHAMPION BULL \$100**

Class 57 **JUNIOR CHAMPION INTERBREED FEMALE \$50**

Class 58 **SENIOR CHAMPION INTERBREED**

**FEMALE \$50**

Class 59 **GRAND CHAMPION FEMALE \$100**

Class 60 **SUPREME BEEF EXHIBIT \$200**

### PARADERS

Entry fee \$2.

Enter on the day at the announcer's tent before  
12noon.

Competitors under the age of 18 are NOT to lead bulls.

Class 61 Under 13 years

Class 62 13 years & 14 years

Class 63 15 years & 16 years

Class 64 17years & 18 years

Class 65 19 years & under 25 years

**Champion Parader**

**Reserve Champion Parader**

### JUNIOR JUDGING PRESENTATION

Class 66 Under 15 years

Class 67 15 and 16 years

Class 68 17 and 18 years

Class 69 19 and under 25 years

**Champion Junior Judge**

**Reserve Champion Junior Judge**

**SHOULD YOU CHOOSE TO CAMP OVERNIGHT  
PRIOR TO THE SHOW THERE IS NO CAMPING FEE  
BUT PLEASE PAY YOUR GATE ENTRY FEE TO THE  
CHIEF CATTLE STEWART.**

**All camping equipment needs to be packed up and  
away by 7.30am.**

### MECHANICAL BULL RIDE



**Are you up for the challenge?  
Think you can ride a bull?  
Why not give the Mechanical Bull  
a try at  
The Picton Show**

## Jim Hinton & Sue Stock Contractor



**Mustering  
Drenching  
Stock Transport**

**T: 4681 8971 M: 0413 756 419**

### SATURDAY AFTERNOON Children's Running Races

**FREE COMPETITION  
starting at 5 pm (approx).**

**Age Groups:**

6 years and Under, 7-9 years

10-12 years, 13 years & over

**WALSH**



**LIVESTOCK**

**MOBILE STOCKYARDS PH: 0411 192 574**



**Entry Forms available to download from the Picton Show website  
www.pictonshow.com.au or photocopy this page**

## Picton District A.H. & I. Society Inc.

P.O. Box 34 Picton, NSW 2571 Ph. 02 4677 2485

## Entry Form

Name of Exhibitor: .....

Age: (Junior entries only) .....

Address: .....

.....

Contact Phone No. ....

Email:.....

**Declaration by Exhibitor: My/Our entry is of a domestic, private, recreational pursuit or hobby.**

I/We hereby agree to abide by the rules and regulations of the  
Picton District A.H. & I. Society Inc.

Signature of Exhibitor:.....

[illegible]Please tick if you are a local exhibitor ☐

# Picton District A.H. & I. Society Inc.

P.O. Box 34 Picton, NSW 2571 Ph. 02 4677 2485

## Entry Form

Name of Exhibitor: .....

Age: (Junior entries only) .....

Address: .....

.....

Contact Phone No. ....

Email: \_\_\_\_\_

**Declaration by Exhibitor: My/Our entry is of a domestic, private, recreational pursuit or hobby.**

I/We hereby agree to abide by the rules and regulations of the  
Picton District A.H. & I. Society Inc.

Signature of Exhibitor:.....

[illegible]Please tick if you are a local exhibitor ☐



## Horse Events

**Saturday 26th & Sunday 27th October 2019**

**Chief Steward for 2019 Show:**

Chris Seccull Ph: 4681 8060

Showground Ph: 4677 2485

Mobile 0429 818 068

- This Show to be Run under H.S.A.A. Rules – Results forwarded to R.A.S.
- Shows reserve the right to test horse exhibits for prohibitive substances.
- Gates Open 6 am.
- No refunds on Ring Tickets.
- Entry Fee Non-members \$5.00, Members \$4.00 except Pony Club Classes which are \$3.50 (GST inclusive).
- No stallion to be ridden in Hack or Ridden Classes except in Stallion Classes.
- No person under 17 years of age shall be permitted to ride or lead a stallion or colt.
- All Competitors / Handlers and any persons entering the Main Arena of PICTON SHOWGROUND competition arena must sign a WAIVER and wear a wrist band issued by the Agricultural Societies Council of NSW.
- Every Exhibitor bringing horses to the Show will be required to list each horse being shown together with the PIC for the property from which it has come, on the waiver form each day before competing.

All competitors compete at entirely their own risk. The Society will not be responsible for any accidents that may be caused through or by an exhibit.

**Drug testing may be carried out at this Show:**

Any competitor found to have breached the ASC Disputes and Disciplinary regulations will be investigated by the ASC Disciplinary Committee.

**Appeals:** All appeals must be lodged with the Secretary, or left at the office of the Secretary, addressed to her, by the close of the show. Such protests, in writing, are to be accompanied by \$50 + GST, which may be forfeited if the protest is considered frivolous.

**Definitions:**

Local – Resident of Wollondilly Shire (Riders must be resident in the Wollondilly Shire for 3 months prior to the Show and Horses must have been stabled in the Wollondilly Shire for 3 months prior to the show.)

Novice – Not won a 1st Prize at an Agricultural Show.

Intermediate – Not won a 1st Prize at Royal Show.

Ladies Hack – To be ridden by lady 17 yrs & older.

Gents Hack – To be ridden by a gent 17 yrs & older.

Child's Hack – To be ridden by a Junior under 17 yrs.

Consolation – Horse or Rider not placed in any event on the day of the show.

The Picton District A.H. & I. Society retains the right to alter the program as it deems necessary.



**PICTON  
SAND & SOIL**

**Proudly Supplying Wollondilly & Surrounds all your:**

- Sands ● Aggregates ● Mulches
- Soils ● Decorative Pebbles ● Sandstone



Picton Sand and Soil has been locally owned and operated since its opening in 2002. Proudly supporting Wollondilly's Community for over 15 years. Call us today and speak to one of our friendly team members about how we can assist you with your landscape & building needs.

**PH: 4677 1333**

*for all your equestrian essentials*



[www.equissentials.com.au](http://www.equissentials.com.au) • [service@equissentials.com.au](mailto:service@equissentials.com.au)

ph: **02 4683 1762** • Shop 6 Larkin St, Tahmoor NSW 2573

**Carolyn Shiels** | Principal Solicitor

**Shiels  
LEGAL**

**P | 02 4677 1616**

## Special Thanks ...

Picton District A. H. & I. Society would like to thank all those who donated their time and effort to the Show and we would also like to thank the following for their generous support of the Horse Program enabling us to make our show a success.

## SPONSORS

### **PICTON SAND & SOIL Gold Major Sponsor of all Ribbons and Sashes presented in the horse ring.**

Sharon Dykes; Tye Waning; Casey Hall; Kate Hall;  
The Cropp Family; Australian Warmblood Association;  
The Pullman Family; Chris & Mick Seccull; Di Davison;  
JMP Automotives Bargo; Equissentials Saddlery  
Tahmoor; Shiels Legal; Argyle Hair Design Picton; Irene  
Norris; Minto Show Society; Wollondilly Trophies; The  
Puckeridge Family, Lynn & Richard Ponting; Waratah  
Park Stud; Emma's Show Horses; Karman Paints;  
Mr & Mrs Hagarty; Gail Apps; Standardbred Pleasure  
& Performance Horse Association NSW Inc; Leanne  
Somerville; Trachelavic Park Ponies; Lesley Lloyd;  
A.T Ribbons; Glenda Forbes

### **Saturday 26th October**

- Ring 1 – Arabs, Miniature Horses
- Ring 2 – Pony Club
- Ring 3 – Shetlands, Miniature Ponies, Australian  
Stud Book Ponies
- Ring 4 – Palominos, Pintos, Buckskins &  
Warmbloods, StandardBred
- Ring 5 – Appaloosas, Quarter Horses, Paints,  
Solid Paints, Palouse Ponies, and Welsh  
Ponies.

### **Sunday 27th October**

- Ring 1 – Ponies, Junior Riding Classes
- Ring 2 – Galloways, Senior Riding Classes
- Ring 3 – Hacks, Adult Riding Classes
- Ring 4 – Stockhorses, ANSA, Australian Riding  
Ponies, Saddle Ponies.

Judged after Lunch ~ when all Champion Hacks have  
been judged

**Ben Apps Memorial Champion Local Ridden Hack:  
Trophy and sash donated by Gail Apps  
Hugh Wonson Memorial Trophy  
Supreme Ridden Hack of the Show - Sash donated  
by A.T Ribbons**

## **RING 1 ARABIANS, DERIVATIVES, MINIATURE HORSES**

**Saturday 26th October at 8.30 am**  
Must be Registered with A.H.S.A

### **Pure Bred Arabians**

\* Winners of these classes not eligible for Champion

- 1. \* Best Presented Trophy donated by Shiels Legal
- 2. \* Classic Head Trophy donated by Shiels Legal
- 3. \* Classic Trot Trophy donated by Shiels Legal
- 4. Led Colt under 2 years
- 5. Led Colt 2 years & under 4 years
- 6. Led Stallion 4 years & over

### **Champion and Reserve Champion Pure Bred Arabian Colt or Stallion**

- 7. Led Filly under 2 years
- 8. Led Filly 2 years & under 4 years
- 9. Led Mare 4 years & over

### **Champion Purebred Arabian Led Filly or Mare Trophy donated by Shiels Legal Picton Reserve Champion Purebred Arabian Led Filly or Mare**

- 10. Led Gelding under 3 years
- 11. Led Gelding 3 years & over, up to 14.2 hds.
- 12. Led Gelding 3 years & over, & over 14.2 hds.

### **Champion and Reserve Champion Purebred Arabian Led Gelding Supreme Led Purebred Arabian Trophy donated by Shiels Legal Picton**

- 13. Ridden Stallion
- 14. Ridden Mare
- 15. Ridden Gelding

### **Champion & Reserve Champion Ridden Purebred Arabian Champion Trophy Donated by Irene Norris**

### **Arabian Progeny Classes**

- 16. Dams Progeny Group (Consisting of 2 Progeny  
out of 1 Dam, to include Pure or Derivative Arabians)
- 17. Sires Progeny Group (Consisting of 2 Progeny  
by the same Sire, to include Pure or Derivative  
Arabians)

### **Arabian Derivatives**

\* Winners of these classes not eligible for Champion

- 18. \* Best Presented
- 19. \* Classic Head
- 20. \* Classic Trot
- 21. Led Colt under 2 years
- 22. Led Stallion 3 years & over

### **Champion & Reserve Champion Led Colt or Stallion**

- 23. Led Filly under 2 years
- 24. Led Filly 2 years & under 4 years, & up to 14.2 hds
- 25. Led Filly 2 years & under 4 years & over 14.2hds
- 26. Led Mare 4 years & over, & up to 14.2hds
- 27. Led Mare 4 years & over, & over 14.2hds

### **Champion and Reserve Champion Led Mare or Filly**

- 28. Led Gelding under 3 years
- 29. Led Gelding 3 years & over & up to 14.2 hds
- 30. Led Gelding 3 years & over & over 14.2 hds

### **Champion & Reserve Champion Led Gelding Supreme Led Derivative**

- 31. Ridden Stallion
- 32. Ridden Mare
- 33. Ridden Gelding

### **Champion & Reserve Champion Ridden Derivative Exhibit**

### **Australian Miniature Horses**

Must be registered

- 34. Colt 2yrs & under
- 35. Stallion 3yrs & over

### **Champion & Reserve Champion Miniature Horse Colt or Stallion**



36. Filly 2yrs & under  
 37. Mare 3yrs & over  
**Champion & Reserve Champion Miniature Horse  
 Filly or Mare**

38. Gelding 2 years and Under  
 39. Gelding 3 years & Over  
**Champion & Reserve Champion Miniature Horse  
 Gelding.**

**Supreme Led Miniature Horse  
 Trophy Donated by Irene Norris**

## RING 2: PONY CLUB CLASSES

**Saturday 26th October at 8.30am**

- Competitors must be financial members of a Pony Club affiliated with the P.C.A. of N.S.W.
- P.C.A. of N.S.W. Rules apply.
- Pony Club uniforms to be worn.
- The only acceptable helmet for Pony Club events is that which carries the standard AS/NZS 3838 number stamped.
- The Graham Wallace Memorial Trophy Encouragement Award. Trophy Donated by Lesley Lloyd
- The Picton District A.H. & I. Society John Shannon Memorial Trophy will be presented to the most successful Wollondilly P.C. Rider.
- Trophies will be presented to the most successful Girl and Boy Rider.
- Classes 1,2,3, & 4 must be ridden in a Snaffle Bit. A dropped noseband is permitted.

1. Beginner Rider under 9 yrs on the led.
2. Beginner Rider under 9yrs off the lead.
3. Most Suitable Pony Club Mount-Rider under 12 yrs.
4. Most Suitable Pony Club Mount-Rider 12yrs & under 15 yrs
5. Most Suitable Pony Club Mount - Rider 15 yrs & under 17 yrs
6. Most Suitable Pony Club Mount - Associate Rider
7. Girl Rider under 9 years
8. Boy Rider under 9 years
9. Girl Rider 9 years & under 12 years
10. Boy Rider 9 years & under 12 years
11. Girl Rider 12 years & under 15 years
12. Boy Rider 12 years & under 15 years
13. Girl Rider 15 years & under 17 years
14. Boy Rider 15 years & under 17 years
15. Girl Associate Rider
16. Boy Associate Rider
17. Pair of Riders under 12 years
18. Pair of Riders 12 years & under 15 years
19. Pair of Riders 15 years & under 17 years
20. Pair of Associate Riders
21. Pony Club Team under 13 years
22. Pony Club Team 13 years & under 17 years
23. Pony Club Team Associate Riders
24. Costume Class under 12 years
25. Costume Class 12 years & Over
26. Flag Race under 9 years
27. Bending Race under 9 years
28. Flag Race 9 years & under 12 years
29. Bending Race 9 years & under 12 years



## RIDING FOR THE DISABLED

**WOLLONDILLY CENTRE  
TAHMOOR**

Like to know more ...  
about  
Helping our Disabled?

**For Information:**

**Ph: 4684 1336**

**Ph: 4684 2564**



**WOLLONDILLY  
PONY CLUB  
TAHMOOR**

---

**SERVING OUR YOUTH  
SINCE 1968**

---

**NEW MEMBERS  
ALWAYS WELCOME**

**Enquiries: 4684 1336  
or 0414 706 077**

30. Flag Race 12 years & under 15 years
31. Bending Race 12 years & under 15 years
32. Flag Race 15 years & under 17 years
33. Bending Race 15 years & under 17 years
34. Flag Race Associate
35. Bending Race Associate

### **RING 3: SHETLANDS, MINIATURE PONIES, STUD BOOK PONIES**

**Saturday 26th October at 8.30 am**

Must be registered with their relevant societies

1. Best presented Shetland, not eligible for Champion
2. Led Yearling Colt
3. Led Colt 2 years & under 4 years
4. Led Stallion 4 years & over

**Champion Led Yearling, Colt or Stallion**

5. Yearling Filly
6. Led Filly 2 years & under 4 years
7. Led Mare 4 years & over
8. Led Broodmare

**Champion Led Filly or Mare & Reserve Led**

9. Led Gelding 8.2hds. not exceeding 9.2hds
10. Led Gelding over 9.2hds not exceeding 10.2hds

**Champion Led Gelding &**

**Reserve Champion Led Gelding**

**Supreme Led Shetland Trophy donated by Glenda Forbes**

11. Junior Handler under 17 years
12. Ridden Shetland Prize donated by Wollondilly Trophies
13. Shetland in Harness Colt or Stallion
14. Shetland in Harness, Mare, Filly or Gelding

**Champion Shetland in Harness - Clinton Westwood Memorial Trophy donated by Minto Show Society and Picton District A.H. & I. Society and Reserve Champion Shetland in Harness**

### **Australian Miniature Ponies**

Must be registered with relevant society

15. Best presented Miniature Pony, not eligible for Champion
16. Yearling Colt
17. Colt 2 years & under 4 years
18. Stallion 4 years & over

**Champion & Reserve Champion Colt or Stallion**

19. Yearling Filly
20. Filly 2 years & under 4 years
21. Mare 4 years & over

**Champion & Reserve Champion Filly or Mare**

22. Led Gelding under 4 years
23. Led Gelding 4 years & over

**Champion and Reserve Champion Gelding**

**Supreme Australian Miniature Pony**

**Supreme Trophy donated by Karman Paints**

### **Australian Ponies**

Registered with APSB

Partbred & Welsh ponies are not eligible

24. Led Colt 3 years & under
25. Stallion 4 years & over - Under 12 hds.
26. Stallion 4 years & over - 12 hds. & under 13 hds.

27. Stallion 4 years & over - 13 hds. & not exc. 14hds.  
**Champion Led Colt or Stallion and Reserve Champion Led Colt or Stallion**
28. Led Filly 3 yrs. & under
29. Led Mare 4 yrs. & over - under 12 hds.
30. Led Mare 4 yrs. & over - 12 hds. & not exc. 13hds.
31. Led Mare 4 yrs. & over - 13hds. & not exc. 14hds.

**Champion Led Filly or Mare &**

**Reserve Champion Led Filly or Mare**

32. Led Gelding under 12.2hds.

33. Led Gelding 12.2hds. & not exceeding 14hds.

**Champion Led Gelding &**

**Reserve Champion Led Gelding.**

**Supreme Led Australian Pony Exhibit**

**Trophy donated by Irene Norris**

34. Ridden Pony Stallion not exceeding 14hds.
35. Ridden Pony Mare not exceeding 14hds.
36. Ridden Gelding not exceeding 14hds.

**Champion and Reserve Champion Ridden Pony**

### **Partbred Australian Ponies**

Must be registered

37. Led Filly under 4yrs.
38. Led Gelding under 4yrs.
39. Led Mare 4yrs & Over
40. Led Gelding 4yrs & Over.

**Champion Led Part Bred Australian Pony &**

**Reserve Champion Part Bred Australian Pony**

41. Novice Ridden Mare or Gelding not exc. 14hds.
42. Open Ridden Mare or Gelding not exc. 13.2 hds
43. Open Ridden Mare or Gelding over 13.2 hds

**Champion Ridden Part Bred Australian Pony & Reserve Champion Ridden Part Bred Australian Pony.**

### **RING 4: PALOMINOS, PINTOS, BUCKSKINS, WARMBLOODS & STANDBRED**

**Saturday 26th October at 8.30 am.**

Must be registered in their relevant breeds

#### **Palominos** Must be registered

1. Best mane and tail\*
2. Best coat colour\*
3. Best presented Palomino\*
- \* Winners of these classes Not eligible for Champion
4. Led colt under 2 years
5. Led colt 2 years & under 4 years
6. Led stallion 4 years & over.

**Champion & Reserve Colt or Stallion**

7. Led Filly under 2 years
8. Led Filly 2 years & under 4 years
9. Led Mare 4 years & over

**Champion & Reserve Champion Led Filly or Mare**

10. Led Gelding not exceeding 14 hds.

11. Led Gelding over 14 hds, not exc. 14.2 hds.

12. Led Gelding over 14.2 hds.

**Champion & Reserve Champion Led Gelding**

**Supreme Led Palomino Trophy donated**

**by Irene Norris**

13. Ridden Stallion

14. Ridden Mare
15. Ridden Gelding

**Champion & Reserve Champion Ridden Palomino**

**Pintos**

Must be registered

16. Best Presented\*
17. Junior Handler\*
18. Best Marked\*

\* Winners of these classes Not eligible for Champion

19. Led Colt under 2 years
20. Led Stallion not exceeding 14 hds.
21. Led Stallion 14 hds & over.

**Champion & Reserve Champion Led Colt or Stallion**

22. Led Filly under 2 years
23. Led Mare not exceeding 14 hds.
24. Led Mare 14 hds. & over

**Champion and Res. Champion Led Filly or Mare**

25. Led Gelding not exceeding 14 hds.
26. Led Gelding over 14 hds.

**Champion and Reserve Champion Led Gelding.  
Supreme Led Pinto Exhibit Trophy donated by  
Waratah Park Stud**

27. Ridden Stallion
28. Ridden Mare
29. Ridden Gelding

**Champion & Reserve Champion Ridden Pinto**

**Buckskins**

Must be registered

30. Best Presented Buckskin \*Winner not eligible for Champion
31. Led Buckskin Stallion
32. Led Buckskin Mare
33. Led Buckskin Gelding

**Champion and Reserve Champion Led Buckskin**

34. Ridden Buckskin Stallion
35. Ridden Buckskin Mare
36. Ridden Buckskin Gelding

**Champion & Reserve Champion Ridden Buckskin**

**Warmbloods**

Must be registered A.W.H.A

**Sashes donated by**

**Australian Warmblood Horse Association**

37. Led Colt under 3 years
38. Led Stallion 3 years and over
39. Led Filly under 3 years
40. Led Mare 3 years and over
41. Led Gelding

**Champion and Reserve Champion Led Warmblood  
Trophy donated by Irene Norris**

42. Ridden Colt or Stallion
43. Ridden Mare or Filly
44. Ridden Gelding

**Champion Ridden Warmblood  
Trophy donated by Karman Paints.  
Reserve Champion Ridden Warmblood**

**Standardbred**

Must be registered with relevant Society

**Broad Ribbons kindly donated by the Standardbred  
Pleasure & Performance Horse Association NSW  
Inc**

Led

45. Best Presented Standardbred
46. Led Stallion or Colt under 4 yrs
47. Led Stallion 4 years & over

**Champion & Reserve Champion Led Standardbred  
Stallion or Colt**

48. Led Filly under 4 years
49. Led Mare 4 years & over

**Champion & Reserve Champion Led Standardbred  
Mare or Filly.**

50. Led Gelding under 7 years
51. Led Gelding 7 years & over.

**Champion & Reserve Champion Led Standardbred  
Gelding**

**Supreme Led Standardbred**

52. Beginner Ridden Standardbred Walk & Trot  
Not Eligible for Champion Ridden
53. Novice Ridden
54. Open Ridden Stallion or Colt
55. Open Ridden Mare or Filly
56. Open Ridden Gelding

**Champion & Reserve Champion Ridden  
Standardbred**

**Champion Trophy Donated by Mick & Chris Secull**

57. HARNESS RACING NSW "OFF THE TRACK"  
Series Qualifier.

**Champion & Reserve Champion**

This series is open to any Standardbred registered with  
Harness Racing Australia or New Zealand.

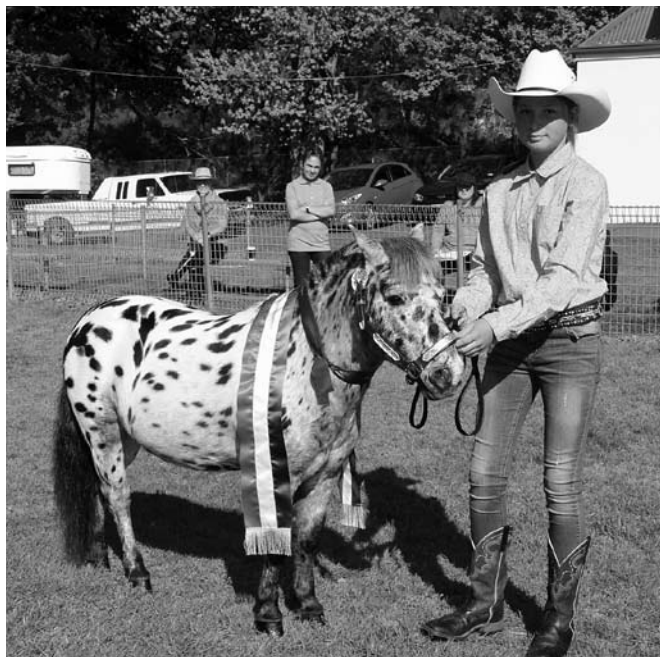
For more information and rules please go to  
[www.standardbred.org.au/hrnsw-off-the-track-series2019-2020](http://www.standardbred.org.au/hrnsw-off-the-track-series2019-2020)

**RING 5: APPALOOSAS, QUARTER  
HORSES, PAINTS, PALOUSE PONIES**

**Saturday – 26th October at 8.30am**

**Appaloosas (Reg. AAA)**

1. Best Presented Appaloosa (not eligible for Champion)
2. Led Colt 3 years & under
3. Led Stallion 4 years & over





### **Champion and Reserve Champion Colt or Stallion**

4. Led Filly 3 years & under
5. Led Mare 4 years & over

### **Champion and Reserve Champion Mare or Filly Trophies donated by Shiels Legal Picton**

6. Led Gelding 3 years & under
7. Led Gelding 4 years & over

### **Champion Led Appaloosa Gelding and Reserve Champion Appaloosa Led Gelding - Trophies donated by Shiels Legal Picton**

### **Supreme Appaloosa Exhibit - Trophy Donated by Mick & Chris Seccull**

### **Quarter Horses** Must be registered AQHA

8. Best Presented Quarter Horse (not eligible for Champion) **The Michael Norris Memorial Trophy donated by Irene Norris**

9. Led Colt 3 years & under
10. Led Stallion 4 years & over

### **Champion and Reserve Champion Led QH Colt or Stallion**

11. Led Filly 3 years & under
12. Led Mare 4 years & over

### **Champion and Reserve Champion Led QH Filly or Mare Trophies donated by Shiels Legal**

13. Led Gelding 3 years & under
14. Led Gelding 4 years & over

### **Champion Led QH Gelding Trophy donated by Mick & Chris Seccull.**

### **Reserve Champion Led Gelding**

### **Supreme Led Quarter Horse (Tim Smith Memorial Trophy)**

### **Paints**

Must be registered with PHAA

15. Best Presented Paint Not Eligible for Champion
16. Best Coloured Paint Not Eligible for Champion
17. Led Paint Colt 3yrs & under
18. Led Paint Stallion 4yrs & over

### **Champion & Reserve Champion Led Colt or Stallion**

19. Led Paint Filly 3yrs & under
20. Led Paint Mare 4yrs & over

### **Champion & Reserve Champion Led Filly or Mare Champion Trophy donated by The Cropp Family**

21. Led Paint Gelding 3yrs & under
22. Led Paint Gelding 4yrs & over

### **Champion & Reserve Champion Led Gelding Champion Trophy donated by The Cropp Family**

### **Supreme Led Paint Trophy donated by Tye Waning & Casey Hall**

### **Solid Paints**

Must be registered with the PHAA

23. Best Presented Solid Paint
24. Led Solid Colt or Stallion
25. Led Solid Filly or Mare
26. Led Solid Gelding

### **Champion and Reserve Champion Solid Paint Trophies donated by Lynne & Richard Ponting**

### **Palouse Ponies**

Must be registered

27. Best presented Palouse\* Not Eligible for Champion
28. Led Palouse Colt or Stallion

29. Led Palouse Mare or Filly
30. Led Palouse Gelding

### **Champion and Reserve Champion Palouse Trophy donated by Mick & Chris Seccull**

### **Open Performance Classes**

Run under H.S.A.A. Rules

(Amateurs must hold current A/O card)

31. Youth Showmanship - 18 years & under **Trophy donated by Shiels Legal Picton**
32. A/O Showmanship **Trophy donated by Shiels Legal Picton**
33. Lead Line 8yrs & under **Trophy Donated by Leanne Somerville**
34. Youth Western Pleasure. 18 years & under **Trophy donated by Irene Norris**
35. A/O Western Pleasure **Trophy donated by Irene Norris**
36. Open Walk and Jog Western Pleasure **Mick & Chris Seccull**
37. Junior Western Pleasure - 5 years & under
38. Senior Western Pleasure - 6 years & over **Trophy donated by Shiels Legal Picton**
39. Youth Western Horsemanship
40. A/O Western Horsemanship
41. Youth Hunt Seat Equitation – 18 yrs & under
42. A/O Hunt Seat Equitation
43. Youth Hunter Under Saddle – 18 yrs & under **Trophy donated by Shiels Legal Picton**
44. A/O Hunter Under Saddle **Trophy donated by Shiels Legal Picton**
45. Open Walk and Trot Hunter Under Saddle **Trophy donated by Kate Hall**
46. Junior Hunter Under Saddle – 5 years & under
47. Senior Hunter Under Saddle – 6 years & over **Trophy donated by Shiels Legal Picton**
48. Open Hunter Under Saddle **Trophy donated by Shiels Legal Picton**

## **RING 5 – WELSH PONIES**

**Saturday – 26th October**

Starts Approximately Lunch Time

### **Welsh Mountain Pony**

Section A: (Not exceeding 12 hds)

1. Led Yearly Colt
2. Led Colt 2 & 3 Years
3. Led Stallion 4 Years & Over
4. Led Yearling Filly
5. Led Filly 2 & 3 Years
6. Led Mare 4 Years & Over
7. Led Gelding Any Age

### **Champion & Reserve Champion Welsh Mountain Pony (Section A) Champion Trophy Donated by Tarchelavic Park Ponies**

### **Welsh Pony**

Section B: (Not Exceeding 13.2 hds)

8. Led Yearling Colt
9. Led Colt 2 & 3 Years
10. Led Stallion 4 Years & Over
11. Led Yearling Filly
12. Led Filly 2 & 3 Years
13. Led Mare 4 Years & Over

14. Led Gelding Any Age  
**Champion and Reserve Champion Welsh Pony  
(Section B)**

**Welsh Pony of Cob Type**

Section C: (Not exceeding 13.2 hds)

15. Led Stallion or Colt  
16. Led Mare or Filly  
17. Led Gelding

**Champion and Reserve Champion  
Welsh Pony of Cob Type (Section C)**

**Welsh Cob**

Section D: (over 13.2 hds)

18. Led Stallion or Colt  
19. Led Mare or Filly  
20. Led Gelding

**Champion & Reserve Champion Welsh Cob  
(Section D)**

**SUPREME WELSH IN HAND EXHIBIT  
Trophy donated by Tarchelavic Park Ponies**

**Part Welsh**

21. Led Colt or Filly 3 Years & under  
22. Led Mare - 4 years & over  
23. Led Stallion - 4 years & over  
24. Led Gelding

**Champion Part Welsh & Reserve Champion Part  
Welsh**

25. Welsh Leading Rein not exceeding 12 hds. (Rider  
3 years and under 8 years)  
26. Ridden Welsh Stallion  
27. Ridden Welsh Mare  
28. Ridden Welsh Gelding

**Champion & Reserve Champion Ridden Welsh**

29. Ridden Part Welsh Stallion  
30. Ridden Part Welsh Mare  
31. Ridden Part Welsh Gelding

**Champion & Reserve Champion Ridden Part Welsh**

**RING 1: PONIES, JUNIOR RIDING CLASSES**

**Sunday 27th October at 8.30am**

**Please Note:** Horses competing in Show Hunter Pony  
Classes are not eligible for Open Pony Classes.

1. Led Mare not exceeding 14 hds.  
2. Led Gelding not exceeding 14 hds.  
3. Led Stallion not exceeding 14 hds.

**Champion and Reserve Champion Led Pony**

4. Novice Pony Hack not exceeding 12.2 hds.  
5. Pony Hack not exceeding 11.2 hds.  
6. Pony Hack under 11.2 hds & not exc. 12 hds.  
7. Pony Hack 12 hds. & not exceeding 12.2 hds.

**Champion and Reserve Champion Small Pony Hack**

8. Novice Pony Hack not exceeding 14hds  
9. Pony Hack 12.2 hds & not exc. 13 hds.  
10. Pony Hack 13 hds. & not exc. 13.2 hds.  
11. Pony Hack 13.2 hds. & not exc. 14 hds.  
12. Open Pony Hack not exceeding 14 hds.  
13. Ladies Pony Hack not exceeding 14 hds.  
14. Gents Pony Hack not exceeding 14 hds.  
15. Child's Pony Hack not exceeding 14 hds.  
16. Intermediate Pony Hack not exc. 14 hds.

# Dining Room

Enjoy the quieter surroundings  
of our Dining Room  
in our A.H. & I. Society hall

Relax and catch up with old  
and new friends over a hot  
cuppa and morning tea, lunch  
or  
afternoon tea

Open both  
Saturday and Sunday

Try the delicious  
Devonshire tea  
Sandwiches  
Cakes and Slices

Coffee, Tea and Soft Drinks

supplied by the  
Country Women's  
Association of Picton



17. **The John Davison Memorial Trophy** Local Pony Hack not exc. 14 hds. **Donated by the Davison Family**

**Champion Large Pony Hack & Reserve Champion Large Pony Hack**

18. Pleasure Pony not exceeding 12.2 hds  
19. Pleasure Pony over 12.2 hds., not exc. 14 hds.  
20. Consolation Pony not exceeding 14 hds.  
21. Pair of Pony Hacks not exceeding 14 hds.  
22. Novice Ridden Show Hunter Pony n/e 14hds  
23. Show Hunter not exceeding 11.2 hds.  
24. Show Hunter 11.2 hds & not exc. 12 hds.  
25. Show Hunter 12 hds & not exc. 12.2 hds

**Champion and Reserve Champion Small Show Hunter Pony**

26. Show Hunter over 12.2 hds & not exc. 13 hds.  
27. Show Hunter Pony 13 hds & not exc. 13.2 hds  
28. Show Hunter Pony over 13.2 hds & not exc. 14hds  
29. Child Show Hunter Pony  
30. Adult Show Hunter Pony  
31. Open Show Hunter Pony

**Champion and Reserve Champion Show Hunter Pony**

**Champion Local Ridden Hack; Ben Apps Memorial Trophy.**

**Trophy and Sash donated by Gail Apps**

**Supreme Ridden Hack of Show Sash donated by A.T Ribbons.**

*Judged after Lunch*

**Riding Classes:**

32. Tiny Tots under 6 years (must be led) (Competitors in 28 not eligible).  
**Trophy donated by Wollondilly Trophies.**
33. Tiny Tots under 6 years (not led)  
**Trophy Donated by Leanne Somerville**
34. Novice Girl Rider under 12 years -  
**Trophy donated by J.M.P. Automotives, Bargo**
36. Local Girl Rider under 12 years  
37. Girl Rider 6 years & under 9 years  
38. Girl Rider 9 years & under 12 years  
**Junior Champion & Reserve Champion Girl Rider**  
**Champion Girl Rider \$40 voucher donated by Equissentials Saddlery Tahmoor**
39. Novice Boy Rider under 12 years  
40. Local Boy Rider under 12 years  
41. Boy Rider 6 years & under 9 years  
42. Boy Rider 9 years & under 12 years  
**Junior Champion & Reserve Champion Boy Rider**  
**Junior Champion Local Rider 'Debbie Puckeridge Memorial Trophy' Donated by The Puckeridge Family. \$20 voucher donated by Equissentials Saddlery Tahmoor**  
**Supreme Champion Rider under 12 years Trophy donated by J.M.P Automotives, Bargo**
43. Consolation Rider under 12 years  
44. Pair of Riders under 12 years  
45. Fancy Dress under 9 years  
46. Fancy Dress 9 years & under 12 years

## RING 2: GALLOWAYS

**Sunday 27th October at 8.30am**

**Note:** Horses Competing in Open Galloway Classes are not eligible for Show Hunter Galloway.

1. Led Galloway Mare over 14 hds. & n/e 15 hds.  
2. Led Galloway Gelding over 14 hds. & n/e 15 hds.

**Champion & Reserve Champion Led Galloway**

3. Novice Galloway over 14 hds. & n/e 14.2 hds.  
4. Lightweight Galloway over 14 hds. & n/e 14.2 hds.  
5. Heavyweight Galloway over 14 hds. & n/e 14.2 hds.  
6. Lady's Galloway over 14 hds. & n/e 14.2 hds.  
7. Gent's Galloway over 14 hds. & n/e 14.2 hds.  
8. Child's Galloway over 14 hds. & n/e 14.2 hds.  
9. Intermediate Galloway over 14 hds & n/e 14.2 hds.  
10. Local Galloway over 14 hds. & n/e.14.2 hds.

**Champion & Reserve Champion Ridden Galloway - 14 hds & not exc. 14.2 hds. Champion prize \$50.00 Voucher donated by Equissential Saddlery Tahmoor.**

11. Novice Galloway over 14.2 hds. & n/e 15 hds.  
12. Lightweight Galloway over 14.2 hds. & n/e 15 hds.  
13. Heavyweight Galloway over 14.2 hds. & n/e 15 hds.  
14. Lady's Galloway over 14.2 hds. & n/e 15 hds.  
15. Gent's Galloway over 14.2 hds. & n/e 15 hds.  
16. Child's Galloway over 14.2 hds. & n/e 15 hds.  
17. Intermediate Galloway over 14.2 hds. & n/e 15 hds.

18. Local Galloway over 14.2 hds. & n/e 15 hds.

**Champion and Reserve Champion Ridden Galloway 14.2 hds. & not exceeding 15 hds.**

**Champion Prize Trophy donated by Wollondilly Trophies**

19. Pleasure Galloway over 14 hds & n/e 15 hds.  
20. Consolation Galloway over 14 hds. & n/e 15 hds.  
21. Pair of Galloways over 14 hds & n/e 15 hds.  
22. Show Hunter over 14 hds and n/e 14.2 hds  
23. Show Hunter over 14.2 hds and n/e 15 hds.  
24. Child Show Hunter not exceeding 15 hds  
25. Adult Show Hunter not exceeding 15 hds  
26. Open Show Hunter not exceeding 15 hds

**Champion & Reserve Champion Show Hunter Galloway not exceeding 15 hds**

**Champion Prize Donated by Equissentials Saddlery Tahmoor \$50.00 Voucher**

**Riding Classes:**

27. Novice Girl Rider 12 yrs & under 17 yrs  
28. Local Girl Rider 12 yrs & under 17 yrs  
29. Girl Rider 12 years & under 15 years  
30. Girl Rider 15 years & under 17 years  
**Senior Champion & Reserve Champion Girl Rider**  
31. Novice Boy Rider 12 yrs & under 17 yrs  
32. Local Boy Rider 12 yrs & under 17 yrs  
33. Boy Rider 12 years & under 15 years  
34. Boy Rider 15 years & under 17 years  
**Senior Champion & Reserve Champion Boy Rider. Champion Senior Local Rider 'The Hugh Wonson Memorial Trophy'**  
35. Consolation Rider 12 yrs & under 17 yrs



36. Pair of Riders 12 yrs & under 17 yrs  
**Supreme Rider Under 17 Years**
37. Fancy Dress 12 yrs & under 17 years.

### RING 3: HACKS, ADULT RIDING CLASSES

**Sunday 27th October at 8.30am**

**Note:** Horses competing in Show Hunter Classes are not eligible for Open Hack Classes.

#### Hacks

1. Led Hack Mare over 15 hds. **Trophy donated by Shiels Legal Picton**
  2. Led Hack Gelding over 15 hds. **Trophy donated by Shiels Legal Picton**  
**Champion and Reserve Champion Led Hack Trophies donated by Shiels Legal Picton**
  3. Led Thoroughbred Stallion must be AJC Reg. **Trophy donated by Shiels Legal Picton**
  4. Led Thoroughbred Mare must be AJC Reg. **Trophy donated by Shiels Legal Picton**
  5. Led Thoroughbred Gelding must be AJC Reg. **Trophy donated by Shiels Legal Picton**  
**Champion Led Thoroughbred and Reserve Champion Led Thoroughbred Trophies donated by Shiels Legal Picton**
  6. Novice Hack over 15 hds.
  7. Intermediate Hack over 15 hds.
  8. Open Hack 15 hds and not exceeding 15.2 hds
  9. Open Hack 15.2 hds & not exceeding 16 hds
  10. Open Hack 16 hds & not exceeding 16.2 hds
  11. Open Hack 16.2 hds & over
  12. Child's Hack – under 17 years
  13. Lady's Hack
  14. Gent's Hack
  15. Local Hack over 15 hds.  
**Champion Ridden Hack Reserve Champion Ridden Hack**
  16. Pleasure Hack over 15 hds.
  17. Consolation Hack over 15 hds.
  18. Pair of Hacks over 15 hds.
  19. Show Hunter over 15 hds and n/e 16 hds
  20. Show Hunter over 16 hds
  21. Child's Show Hunter Hack
  22. Adult Show Hunter Hack
  23. Open Show Hunter Hack  
**Champion & Reserve Champion Show Hunter Hack**
- Riding Classes:**
24. Novice Lady Rider 17 years & over
  25. Local Lady Rider 17 years & over  
**1st Prize \$20.00 voucher donated by Argyle Hair Design Picton**
  26. Lady Rider 17 years & under 21 years
  27. Lady Rider 21 years & over  
**Champion and Reserve Champion Lady Rider**
  28. Novice Gent Rider 17 years & over
  29. Local Gent Rider 17 years & over
  30. Gent Rider 17 years & under 21 years
  31. Gent Rider 21 years & over  
**Champion and Reserve Champion Gent Rider Champion Local Adult Rider**
  32. Consolation Rider 17 years & over
  33. Pair of Riders 17 years & over

### RING 4: AUSTRALIAN STOCK HORSES, ANSA, AUSTRALIAN RIDING PONIES AND SADDLE PONIES

**Sunday 27th October at 8.30am**

Australian Stock Horses must be foal recorded or registered with ASHS. Membership cards and registration papers must be produced. Stallion riders/handlers must be 18 years and over. Stallions and colts 2 years and over must be shown with a bit at all times and must be secured with a neck collar when tied up. Moss Vale Branch Point Score Show.

#### Australian Stock Horse Led

1. Yearling
2. Colt 2 yrs & under 4 yrs
3. Stallion 4 yrs & over  
**Champion & Reserve Champion Led Stallion or Colt**
4. Mare under 15 hds, 4 yrs & over
5. Mare 15 hds & over, 4 yrs & over  
**Champion & Reserve Champion Led Mare**
6. Filly 2 yrs
7. Filly 3 yrs  
**Champion and Reserve Champion Led Filly**
8. Gelding 2 yrs

### All Purpose Water Supplies

For all your water needs



Ph: 0455 330 045



9. Gelding 3 yrs
10. Gelding under 15 hds, 4 yrs & over
11. Gelding 15 hds & over, 4 yrs & over  
**Champion & Reserve Champion Led Gelding  
 Supreme Champion Led ASH Exhibit - Silver tray  
 donated by the Pullman Family**
12. Junior Handler 17 years & under **Trophy  
 donated by Shiels Legal Picton**

#### **Australian Stock Horse Ridden**

13. A.S.H.L.A. Class (must be financial member)
14. A.S.H Hack rider under 13 yrs
15. A.S.H Hack rider 13 yrs & under 18 yrs
16. A.S.H Hack Novice horse, any sex
17. A.S.H Hack Novice hack 3yrs & under, any sex
18. Ridden horse 3 yrs & under, snaffle bit
19. Ridden stallion or colt, snaffle bit
20. Ridden mare or filly, snaffle bit
21. Ridden gelding, snaffle bit

**Champion & Reserve Champion  
 Ridden ASH Horse Trophies donated by Shiels  
 Legal Picton**

22. A.S.H. Horse Ridden by Rider 17 Years & under
23. A.S.H. working stallion
24. A.S.H. working mare
25. A.S.H. working gelding
26. Working A.S.H. Rider 17 years & under

**Champion Working ASH -Trophy donated by  
 HP Performance Horses  
 and Reserve Champion Working ASH**

**Supreme Champion Ridden Australian Stock Horse  
 Trophy Donated by Kate Hall**

**Rug donated by Mr. & Mrs. Hagarty for Most  
 Successful Stock Horse on the day, including Led  
 ASH**

#### **ANSA Classes**

All Competitors must be financial members of the Australian  
 National Saddle Horse Association, and horses must be  
 ANSA registered.

27. Led ANSA Stallion 3 yrs. & over
28. Led ANSA Mare 3 yrs & over
29. Led ANSA Gelding any age  
**Champion & Reserve Champion ANSA Led Exhibit**
30. ANSA Horse under Saddle over 14h n/e 15hds.
31. ANSA Horse under Saddle over 15h n/e 16hds.
32. ANSA Horse under saddle over 16hds.

**Champion & Reserve Champion  
 ANSA Horse Under Saddle**

33. Best Presented ANSA Horse and Rider Class.  
 Jodphurs, light coloured pants, long sleeved  
 shirt, ANSA tie and saddlecloth, hat, coat  
 optional, snaffle bit, English or stock saddle.  
 To be judged on horse and rider ability and  
 presentation.

#### **Australian Riding Ponies Reg R.P.S.B**

34. Led Stallion or Colt not exceeding 14.2 hds.
35. Led Mare or Filly not exceeding 14.2 hds.

36. Led Gelding not exceeding 14.2 hds.  
**Champion & Reserve Champion  
 Led Australian Riding Pony Exhibit**

37. Ridden Stallion or Colt not exceeding 14.2 hds.
38. Ridden Mare or Filly not exceeding 14.2 hds.
39. Ridden Gelding not exceeding 14.2 hds  
**Champion & Reserve Champion Ridden Australian  
 Riding Pony Exhibit.**

#### **Australian Saddle Ponies Reg ASP**

40. Led Stallion or Colt not exceeding 14.2 hds.
41. Led Mare or Filly not exceeding 14.2 hds.
42. Led Gelding not exceeding 14.2 hds.

**Champion & Reserve Champion Led Australian  
 Saddle Pony**

43. Ridden Stallion or Colt not exceeding 14.2 hds.
44. Ridden Mare or Filly not exceeding 14.2 hds.
45. Ridden Gelding not exceeding 14.2 hds.

**Champion & Reserve Champion Ridden Australian  
 Saddle Pony**





The Land Sydney Showgirl Competition 2019

# PICTON SHOWGIRL



2015-2016  
Picton Showgirl  
Jasmin Gardener

The Picton Showgirl is chosen from entrants aged 18 to 24 years at 1st May 2020.

Showgirl entrants are judged on their presentation and their general local and rural knowledge.

Our Showgirl acts as an ambassador for the Picton Show Society and the Wollondilly community and will represent us at the Zone Finals in early 2020

The Picton Showgirl competition is sponsored by BRADCORP

## WHAT'S ON

TAB - KENO - ALFRESCO AREA  
ABN: 22 089 602 103 - LTPM/1500359



## Picton Bowling Club

Picton Bowling Club  
024677 1578  
10 Cliffe Street,  
Picton, NSW, 2571

[www.pictonbowlingclub.com.au](http://www.pictonbowlingclub.com.au)  
[info@pictonbowlingclub.com.au](mailto:info@pictonbowlingclub.com.au)

Find us on facebook for  
regular updates & events

**Friday Night Raffle**  
SOLD FROM 6.30PM  
DRAWN FROM 7.30PM  
MEAT TRAYS, IN HOUSE VOUCHERS, WISH  
GIFT CARDS, 2 X MEMBERS DRAW  
COURTESY BUS FROM 5-9PM FOR PICKUP  
DROP OFF FROM 9PM-CLOSE  
PICTON BOWLING CLUB 4677 1578

**PICTON BOWLING CLUB  
COURTESY BUS**  
FRIDAY NIGHTS  
FOR MEMBERS & THEIR GUESTS  
MEMBERSHIP: 2 X YEAR \$200 & 4 YEAR \$350  
PICK UP FROM 5-9PM  
DROP OFFS FROM 9PM-CLOSE  
CHILDREN WELCOME, MUST BE  
FULLY SUPERVISED  
FRONT SEATERS FROM 6PM  
IN HOUSE VOUCHERS,  
WISH GIFT CARDS, MEAT TRAYS  
MEMBERSHIP \$200  
THE BUS WILL GO AS FAR AS  
WILTON, LOWER SIDE OF RAZORBACK,  
BARGO RIVER ROAD, TAHMOOR  
AND LAKESLAND  
CALL 4677 1578 TO BOOK

**PICTON BOWLING CLUB  
BAREFOOT BOWLS**  
Great for 8'days, Hens, Bucks,  
Team building, family day out  
or just a day on the green!  
\$6pp  
BBQ area available for \$10  
PICTON BOWLING CLUB 4677 1578

**Sunday Night Raffle**  
SOLD FROM 6PM  
DRAWN FROM 7PM  
LAMB - PORK - CHICKEN TRAYS  
2 X MEMBERS DRAW  
PICTON BOWLING CLUB 4677 1578

**HAPPY HOUR  
ALL DRINKS  
TUESDAY 5-6PM  
THURSDAY 5.30-6.30PM  
Saturday 2-4pm  
Schooners of Beer  
& House Wine  
DISCOUNTED**

**MEMBERS BADGE DRAW**  
DRAWN TWICE ON  
FRIDAY & SUNDAY NIGHTS  
FRIDAY From  
6pm & 8pm  
SUNDAY From  
6pm & 7.30pm  
\$6pp  
BBQ area available for \$10  
PICTON BOWLING CLUB 4677 1578

**MONDAY**  
Bingo 11am  
Rotary 6pm

**TUESDAY**  
Probus 10am  
(Fourth Tuesday of month)  
View Club 11am  
(First Tuesday of month)  
Yoga 6.30pm  
Happy Hour 5-6pm

**WEDNESDAY**  
Knitting/Crocheting 11am  
Scottish dancing 11am  
Male Bowls 1pm

**THURSDAY**  
Happy Hour 5.30-6.30pm  
Trivia 6.30pm

**FRIDAY**  
Gentle Yoga / Stretch 10am  
Courtesy Bus from 5pm  
Raffles 6.30pm  
Members draw

**SATURDAY**  
Check entertainment Guide  
FREE tribute shows  
Saturday schooners & house wine  
discounted 2-4pm

**SUNDAY**  
Raffles 6pm  
Members draw

**ASK OUR FRIENDLY STAFF  
FOR ASSISTANCE.**

Phone: 024677 1578  
Email: [info@pictonbowlingclub.com.au](mailto:info@pictonbowlingclub.com.au)  
Web: [pictonbowlingclub.com.au](http://pictonbowlingclub.com.au)  
Facebook: Picton Bowling Club

### Functions @ Picton Bowling Club

We specialise in all functions! From Birthday parties to Seminars to celebrations of Life. Enquire now through the front office or check out the website for more information.





## Life Members

**Rhona Dymond**  
**Judith Hickey**  
**Jim Hinton**  
**Ivy Jones**  
**John Lipscombe**  
**Mick Seccull**  
**Chris Seccull**

**Norman Schultz**  
**Annette Watson**  
**Ken Watson**  
**Gwen Wilton**  
**Jan Wilton**  
**Marie Wonson**



## Members 2018-2019 Financial year

Stephen Agosti  
 Gail Apps  
 Michael Banasik  
 Belinda Bate  
 Ian Bate  
 Karen Benson  
 Walter Bergmann  
 Yvonne Bowden  
 Tim Bower  
 Reg Bower  
 Margaret Bower  
 Dr G M Brodie  
 Avice Butcher  
 Colin Butcher  
 Peter Butler  
 Karen Carnduff  
 Judith Cato  
 Dr Denys Cato  
 Norma Crocker  
 Caroline Crowley  
 Melinda Czerny  
 Lyn Davey  
 Diana Davison  
 Gwen Den  
 Russell Den  
 Susan Donohoe  
 Mark Eagles  
 Denise Eagles  
 Jessica Essam  
 Maria Ewing-Terry  
 Neil Falk  
 Julie Farnham  
 Patrica Fawns  
 Lesley Gardiner  
 Jasmin Gardner  
 Roswitha Giersch  
 Bradley Goldsmith  
 Patrica Good  
 Victoria Gould

Kate Hall  
 Helen Hanger  
 Judith Hannan  
 Michael Haynes  
 Colleen Haynes  
 Susan Hill  
 Matthew Hill  
 Nicole Horne  
 Graham Issac  
 Tony Jagicic  
 Bradley Johnson  
 Debbie Johnson  
 Nikoda Johnson  
 Marjorie Kay  
 Yvonne Kelly  
 Tony Kelly  
 Melina Lane  
 Maddison Lane  
 Willie Linger  
 Lesley Lloyd  
 Jade Logan  
 Greg Logan  
 Robyn Logan  
 Jennifer Longmore  
 Keira Lowry  
 Deanne Lule  
 Emily Lule  
 Evelyn Lunney  
 Paul Martin  
 Johanna Martin  
 Linda Mason  
 Tom McLean  
 Jenny McLean  
 Peter Menton  
 Will Monds  
 Karen Monds  
 Tracie Morrissey  
 Kaitlyn Munro  
 Debra Murtagh

Joy Newell  
 Anne Norman  
 Neville O'Grady  
 Jim O'Hearn  
 Helen O'Hearn  
 Julie Philips  
 Nanise Piliae  
 Brian Pullman  
 Alba Pullman  
 Fred Pullman  
 Roberta Rapo  
 Adam Richards  
 Jeremy Riley  
 Alick Robertson  
 Sharon Sagar  
 Nerida Schultz  
 Reg Scott  
 Jill Scott  
 Keith St.Aubyn  
 John Stiphout  
 Kerry Stiphout

Karen Swan  
 Laura Taylor  
 Victoria Taylor  
 Norma Thornton  
 Jessica Tye  
 Michael Underwood  
 Shayley Venn  
 Betty Wallace  
 John Walton  
 Ken Watters  
 Mary Wear  
 Alan Wearn  
 Heather Wearn  
 Larry Wenman  
 Leanne Wenman  
 Peri Whitehead  
 Gail Williams  
 Felicia Williams  
 Jack Wilton  
 Shylie Wood



## Junior Members 2018-2019 Financial year

Tye Waning  
 Matthew McCarthy  
 Evelyn McCarthy  
 Emily Czerny  
 Elisha Lule  
 Emma Lule  
 Cooper Pullman  
 Kasey Pullman  
 Luke Pullman

Jacob Burgess  
 Emily Wilton  
 Tenna Sagar  
 Ebony Crowley  
 Brodie Swan-O'Toole  
 Lily Wenman  
 Rose Wenman  
 Ruby Wenman

*Picton District A.H & I. Society  
 Inc. deeply regrets the sad loss,  
 since our last show of our valued  
 supporters*

*Margaret Bower, John Corbett,  
 Joy Fairley, Noel McPherson,  
 Sandra Potter, Fred Pullman*

*Our sincere sympathy is extended to  
 their families.*





113/61 BRIDGE STREET PICTON NSW 2571

ph: 4677 3393

Supercharging  
Power Packs  
Camshaft Upgrades  
Air Intakes & Exhausts  
Brake Upgrades  
Diesel Tuning



walkinshaw  
PERFORMANCE



mainline  
DynoLog  
Dynamometers



MORE THAN JUST POWER.

John Robert Lic. No. 55904 [sales@jdrmotorsports.net](mailto:sales@jdrmotorsports.net)



**Real Estate**

## **Picton**



**Residential  
Rural  
Commercial/Industrial  
Sales**



**Contact us first for  
prompt, efficient,  
friendly service.**

**Elders Picton**  
8/2 Margaret Street, Picton  
Ph 4677 1958  
Email: [pictonre@elders.com.au](mailto:pictonre@elders.com.au)

**[elderspicion.com.au](http://elderspicion.com.au)**